



YACHT CLUB COSTA SMERALDA

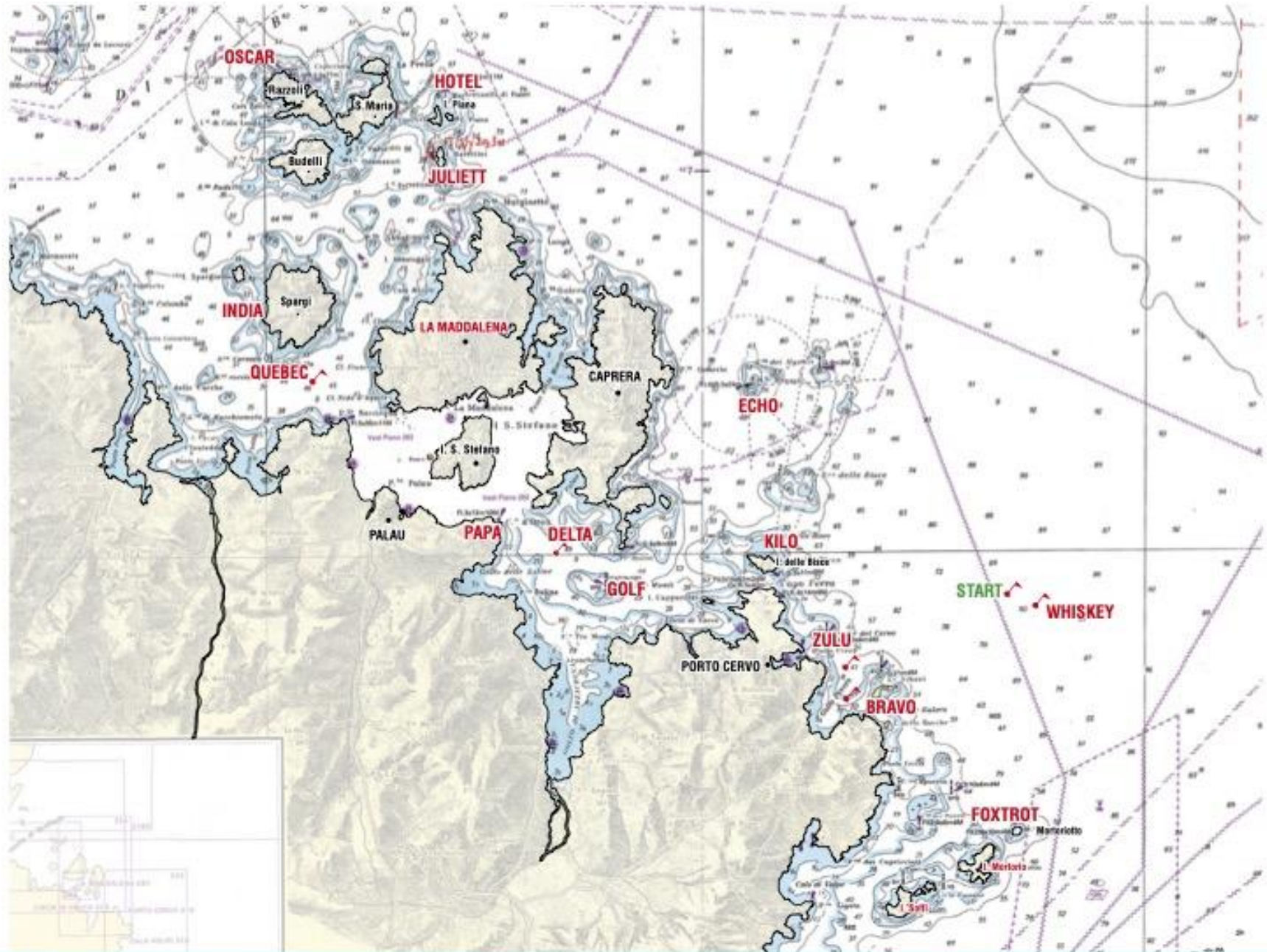


ORC WORLD CHAMPIONSHIP 2022

SAILING INSTRUCTIONS

APPENDIX 3

LONG & SHORT OFFSHORE RACES INSTRUCTIONS



1 WAYPOINT LIST

WPT NAME	Description	LAT. N	LONG. E
BRAVO	Inflatable buoy in Pevero Bay; approx. 0.81 NM on a bearing of 110° from the red light at the entrance to Porto Cervo.	41° 07.850	009° 33.390
CAPO FIGARI MARK	Inflatable buoy near Capo Figari.	40° 59.700	009° 40.300
CHARLIE	Inflatable buoy to be rounded after the Possible Windward Mark, to be broadcast by RC before warning signal.	TBA	TBA
CEDRINO RIVER MARK	Inflatable buoy with a strobe light to leave on the port side.	40° 22.200	009° 44.800
DELTA	Inflatable buoy positioned ENE of Saline Bay	41° 09.850	009° 26.050
ECHO	Islets of Monaci ----- WR 24m beacon	41° 12.930	009° 31.010
FOXTROT	Islets of Mortoriotto ----- 10m beacon	41° 05.190	009° 37.130
Giglio Island		42° 21.380	010° 54.000
GOLF	Inflatable buoy approximately 500 metres east of Beacon Secca Tre Monti	41° 09.350	009° 28.260
HOTEL	Islets of Barrettinelli di Fuori ----- W 22m Beacon	41° 18.090	009° 24.030
INDIA	Isle of Spargi ----- Beacon of Secca Corsara	41° 13.400	009° 20.200
JULIETT	Islets of Barrettinelli ----- I.tti Barrettinelli	41° 16.500	009° 24.300
KILO	Isle of Le Bisce ----- G 11m Beacon	41° 09.710	009° 31.470
La Maddalena	Isle of La Maddalena		
Molarotto Island	See item 6.4 and Image 1		
Mortorio	Islets of Mortorio		
OSCAR	Isle of Razzoli ----- WR 77m Beacon	41° 18.420	009° 20.390
PAPA	Capo d'Orso ----- 12m Beacon	41° 10.670	009° 25.410
QUEBEC	Inflatable buoy south of Spargi Isle	41° 13.000	009° 21.500
Scoglio d'Africa	19 M white Lighthouse with flashing light on top of Africa Rock.	42° 21.506	010° 03.845
Soffi	Islets of Soffi		
STINTINO MARK	Inflatable buoy with a strobe light to leave on the starboard side.	40° 56.000	008° 15.375
Tavolara Island	See item 6.3 and Image 1		
UNIFORM	Inflatable buoy for custom course only.	TBA	
VICTOR	Inflatable buoy for custom course only.	TBA	
WHISKEY	Inflatable buoy that was the pin end of the starting line.		
ZULU	Starboard end of the finishing line. Approx. 0.65 NM on a bearing 090° from the red light at the entrance of Porto Cervo.	41° 08.200	009° 33.200

2 MARK COLOURS

- 2.1 Marks BRAVO and ZULU will be yellow inflatable cylindrical buoys with strobe lights.
- 2.2 All other inflatable marks of the courses will be red cylindrical buoys with strobe lights when needed.

3 COURSE KEY

(s) after the name of a mark or island/islets means that mark is to be rounded to starboard.

(p) after the name of a mark or island/islets means that mark is to be rounded to port.

4 POSSIBLE WINDWARD MARK (PWM)

4.1 The RC may set a windward mark to be rounded after the start, which will be a red inflatable cylindrical. No later than the warning signal the RC will display the approximate compass bearing and distance from the RC signal vessel to the windward mark together with either:

4.1.1 A red flag which indicates the mark shall be left to port.

4.1.2 A green flag which indicates the mark shall be left to starboard.

5 [DP] FLYING GATES

5.1 At the **Cedrina River Mark**, a RC vessel displaying an orange flag (and white light at night) may be present to record roundings. When the RC vessel is present, all boats shall pass between the mark (on the port side) and the RC vessel (on the starboard side).

5.2 At the **Stintino Mark**, a RC vessel displaying an orange flag (and white light at night) may be present to record roundings. When the RC vessel is present, all boats shall pass between the mark (on the starboard side) and the RC vessel (on the port side).

5.3 At the **Whiskey Mark**, a second red inflatable buoy (or RC or a Service vessel displaying an orange flag and white light at night) may be set to starboard of the Whiskey Mark to create a flying gate; all boats shall pass through the gate when present.

5.4 **[DP] Approaching the Gate Procedure:** At night, boats shall illuminate their bow numbers or sail numbers, **using a powerful light**, for identification by RC. The crossing time for each boat shall be recorded and may be communicated via VHF to a boat from RC.

6 PROHIBITED AREAS and PASSAGES

6.1 For all courses, boats are prohibited to pass between:

6.1.1 the Islets of Barrettinelli di Fuori and the Islets of Barrettinelli

6.1.2 the Sardinian coast and the Secca del Cervo

6.1.3 the Sardinian coast and the Li Nibani Isles

6.1.4 the Beacon of Secca Corsara and the Isle of Spargi

6.1.5 the Isle of Spargiotto and the Isle of Spargi

6.1.6 the Sardinian coast and the Islands of Poveri

6.1.7 the Beacon of Punta Rossa and the Isle of Caprera

6.1.8 the Isle of Mortorio and Isle of Soffi

6.1.9 the Isle of le Bisce and Scogli delle Bisce

6.1.10 the Isle of La Maddalena and the Isle of S.Stefano

6.2 Between the Isle of La Maddalena and Palau there is continuous ferry service. Boats shall give priority to the ferries when sailing in their vicinity.

6.3 Tavolara Island (See Image 1)

Zone A of integral reserve which includes: on the island of Tavolara the north-eastern coastal area including Cala di Ponente, Coda di Fuori, Punta Timone, Tanca, Punta del Papa, point south-east of Passo Maso, of about 300 meters of width.

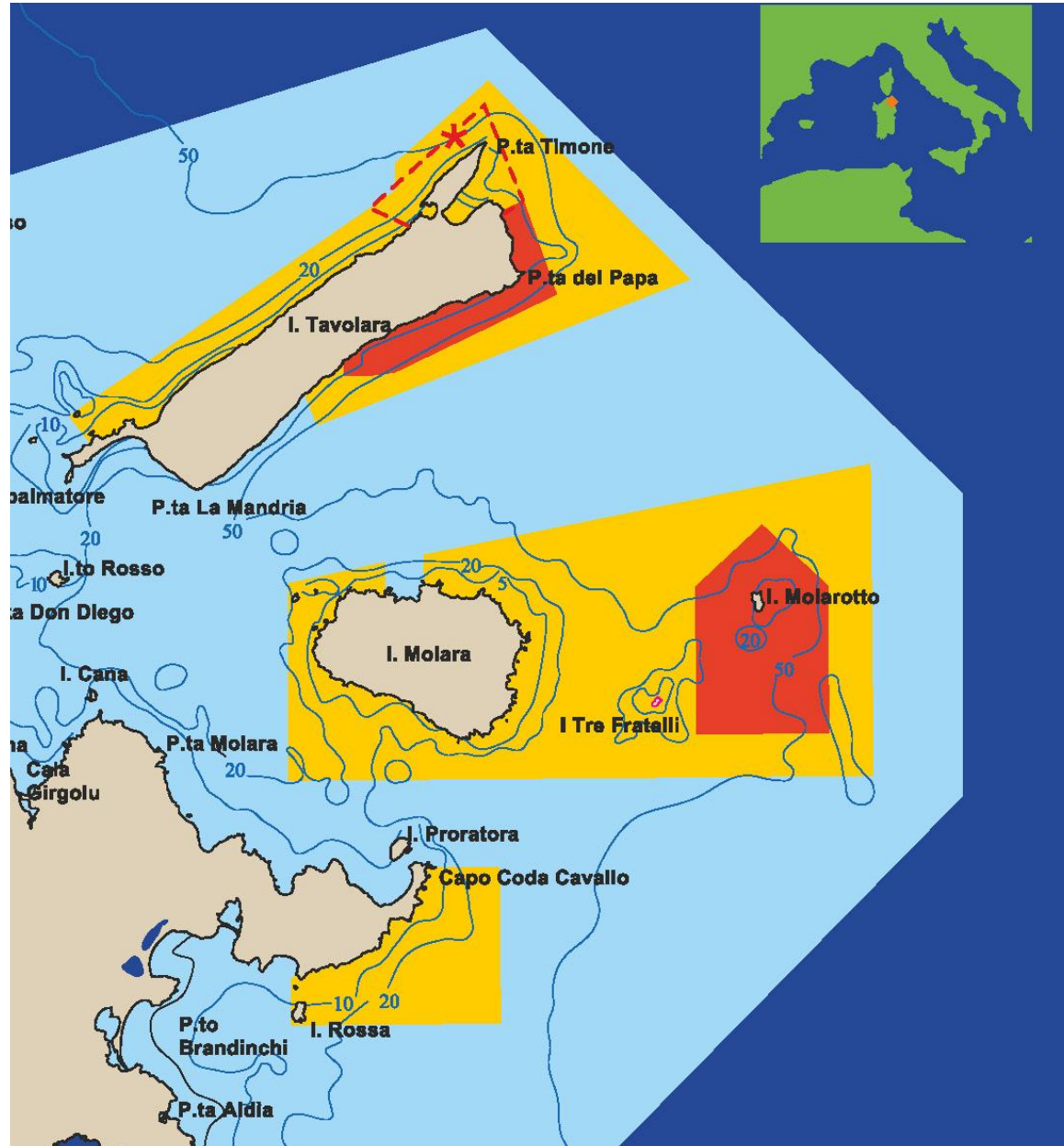
6.4 Molarotto Island (See Image 1)

Zone A is the pentagonal area surrounding Molarotto for a width of about 750 meters to the east and west (sides), about 1,000 meters to the north (vertex) and about 1,500 meters to the south (side).

6.5 **[NP]** If any part of a boat's hull enters a **Zone A** listed in SI Appendix 3 items 6.3 and/or 6.4, the RC shall score that boat DSQ without a hearing.

This changes RRS 63.1 and A5.

IMAGE 1



7 LONG OFFSHORE RACE OPTIONS

Course n° 1
Approx. 208 NM

Start > Scoglio d’Africa (s) > Giglio Island (s) > BRAVO (s) > Finish.

Course n° 2
Approx. 194 NM

Start > ECHO (p) > HOTEL (p) > OSCAR (p) > INDIA (p) > PAPA (s) > GOLF (p) > ECHO (s) > Tavolara Island (s) > Molarotto Island (s) > Cedrino River Mark (p) > Molarotto Island (p) > Tavolara Island (p) > WHISKEY (p) > ECHO (p) > HOTEL (p) > OSCAR (p) > INDIA (p) > PAPA (s) > GOLF (p) > ECHO (s) > JULIETT (s) > La Maddalena (p) > PAPA (s) > KILO (p) > BRAVO (s) > Finish.

Course n° 3
Approx. 191 NM

Start > Soffi (p) > Capo Figari Mark (p) > KILO (s) > GOLF (s) > ECHO (p) > HOTEL (p) > OSCAR (p) > Isle of Spargi (s) > INDIA (s) > Stintino Mark (s) > INDIA (p) > Isle of Spargi (p) > OSCAR (s) > HOTEL (s) > ECHO (s) > FOXTROT (s) > BRAVO (s) > Finish.

Course n° 4
Approx. 188 NM

Start > Giglio Island (s) > BRAVO (s) > Finish.

Course n° 5
Approx. 175 NM

Start > FOXTROT (s) > KILO (s) > GOLF (s) > ECHO (p) > HOTEL (p) > OSCAR (p) > Isle of Spargi (s) > INDIA (s) > Stintino Mark (s) > INDIA (p) > Isle of Spargi (p) > OSCAR (s) > HOTEL (s) > ECHO (s) > FOXTROT (s) > BRAVO (s) > Finish.

Course n° 6
Approx. 173 NM

Start > ECHO (p) > HOTEL (p) > OSCAR (p) > INDIA (p) > PAPA (s) > GOLF (p) > ECHO (s) > Tavolara Island (s) > Molarotto Island (s) > Cedrino River Mark (p) > Molarotto Island (p) > Tavolara Island (p) > WHISKEY (p) > ECHO (p) > HOTEL (p) > OSCAR (p) > INDIA (p) > PAPA (s) > KILO (p) > BRAVO (s) > Finish.

Course n° 7
Approx. 165 NM

Start > ECHO (p) > HOTEL (p) > OSCAR (p) > INDIA (p) > PAPA (s) > GOLF (p) > ECHO (s) > Tavolara Island (s) > Molarotto Island (s) > Cedrino River Mark (p) > Molarotto Island (p) > Tavolara Island (p) > WHISKEY (p) > ECHO (p) > JULIETT (s) > La Maddalena (p) > PAPA (s) > KILO (p) > BRAVO (s) > Finish.

Course n° 8
Approx 160 NM

Start > KILO (s) > GOLF (s) > ECHO (p) > HOTEL (p) > OSCAR (p) > Isle of Spargi (s) > INDIA (s) > Stintino Mark (s) > INDIA (p) > Isle of Spargi (p) > OSCAR (s) > HOTEL (s) > ECHO (s) > BRAVO (s) > Finish.

Course n° 9
Approx. 153 NM

Start > Scoglio d'Africa (s) > BRAVO (s) > Finish.

Course n° 10
Approx. 140 NM

Start > ECHO (p) > HOTEL (p) > OSCAR (p) > INDIA (p) > PAPA (s) > GOLF (p) > ECHO (s) > Tavolara Island (s) > Molarotto Island (s) > Cedrino River Mark (p) > Molarotto Island (p) > Tavolara Island (p) > BRAVO (s) > Finish.

Course n° 11
Approx. 140 NM

Start > Tavolara Island (s) > Molarotto Island (s) > Cedrino River Mark (p) > Molarotto Island (p) > Tavolara Island (p) > WHISKEY (p) > ECHO (p) > HOTEL (p) > OSCAR (p) > INDIA (p) > PAPA (s) > KILO (p) > BRAVO (s) > Finish.

Course n° 12
Approx. 135 NM

Start > Tavolara Island (s) > Molarotto Island (s) > Cedrino River Mark (p) > Molarotto Island (p) > Tavolara Island (p) > WHISKEY (p) > ECHO (p) > JULIETT (s) > La Maddalena (p) > PAPA (s) > KILO (p) > BRAVO (s) > Finish.

Course n° 13
Approx. 119 NM

Start > Tavolara Island (s) > Molarotto Island (s) > Cedrino River Mark (p) > Molarotto Island (p) > Tavolara Island (p) > WHISKEY (p) > ECHO (p) > KILO (p) > BRAVO (s) > Finish.

Course n°14
Approx. 107 NM

Start > Tavolara Island (s) > Molarotto Island (s) > Cedrino River Mark (p) > Molarotto Island (p) > Tavolara Island (p) > BRAVO (s) > Finish.

Course n° 00
Custom Course TBA

8 SHORT OFFSHORE RACE OPTIONS

Course n° **15**
Approx. 68 NM

Start > KILO (s) > PAPA (p) > INDIA (s) > OSCAR (s) > HOTEL (s) > ECHO (s) > WHISKEY (s) > KILO (s) > PAPA (p) > INDIA (s) > HOTEL (s) > ECHO (s) > BRAVO (s) > Finish.

Course n° **16**
Approx. 63 NM

Start > KILO (s) > PAPA (p) > INDIA (s) > HOTEL (s) > ECHO (s) > WHISKEY (s) > KILO (s) > PAPA (p) > INDIA (s) > JULIETT (p) > ECHO (s) > BRAVO (s) > Finish.

Course n° **18**
Approx. 50 NM

Start > ECHO (p) > GOLF (s) > PAPA (p) > INDIA (s) > HOTEL (s) > JULIETT (s) > INDIA (s) > OSCAR (s) > HOTEL (s) > ECHO (s) > BRAVO (s) > Finish.

Course n° **19**
Approx. 47 NM

Start > ECHO (p) > GOLF (s) > PAPA (p) > INDIA (s) > HOTEL (s) > JULIETT (s) > INDIA (s) > HOTEL (s) > ECHO (s) > BRAVO (s) > Finish.

Course n° **20**
Approx. 41 NM

Start > ECHO (p) > GOLF (s) > PAPA (p) > INDIA (s) > HOTEL (s) > JULIETT (s) > La Maddalena (p) > PAPA (s) > KILO (p) > BRAVO (s) > Finish.

Course n° **00**
Custom Course TBA