



SAILING CHAMPIONS LEAGUE
PORTO CERVO 2015

18th to 20th of September 2015

SAILING INSTRUCTIONS.

1 Organizer

The Organising Authority (OA) is the Yacht Club Costa Smeralda in conjunction with the Konzeptwerft Holding GmbH.

2 Rules

2.1 The Event will be governed by:

- (a) The 'rules' as defined in the RRS;
- (b) The rules for Handling Boats (SI Appendix B) that also applies to any practice sailing and sponsor races. Class rules will not apply;
- (c) Any prescriptions of the national authority that will apply will be posted on the official notice board;
- (d) All races will be sailed under ISAF Addendum "Q" ;
- (e) Italian competitors shall be in compliance with the Italian Sailing Federation Rules (FIV cards);
- (f) **In the event of a discrepancy between the Notice of Race (NoR) and the Sailing Instructions (SI), the SI takes precedence. This changes rule 63.7.**

2.2 Changes of Rules.

- (a) RRS 26 is changed, see SI 12
- (b) RRS 27.1 is amended, with the following:

"no later than the warning" is changed to "no later than the 1 minute signal".

2.3 Recorded video and images from any boat support, press, media and / or support boat, or data / video of positioning electronic devices cannot be used as evidence during the hearings and may not be a reason for redress request. This changes the RRS 63.6 - 60.1 (b).

3 Advertising

The rules on advertising are mentioned in SI Appendix C.



Audi
Official partner

Technology partners



4 Notices to competitors

Notices to competitors will be posted on the official notice board located outside the Race Office.

5 Changes to the sailing instructions

Changes to the sailing instructions will be posted on the official notice board or distributed to all teams not less/after than 30 minutes before they will take effect, except that any change to the time schedule of races will be posted by 20.00 the day before it will take effect.

6 Signals made ashore

6.1 Signals made ashore will be displayed on the flag pole on the YCCS Clubhouse terrace overlooking the Piazza Azzurra.

6.2 When flag AP is displayed ashore, '1 minute is replaced with 'not less than 30 minutes' in the race signal AP.

7 Schedule

Thursday, 17th September:

Registration from 09:00 to 18:00

Practice from 12:00 to 18:00

Friday, 18th September:

Registration from 09:00 to 12:30

Practice from 09:30 to 12:30

Official Skippers Briefing at 13:00 at YCCS Clubhouse

First warning signal is at 14:30

Opening ceremony at 20:00

Saturday, 19th September:

Daily Skippers briefing at 09:30

First warning signal at 10:30

Team Dinner at 20.00 at YCCS Clubhouse

Sunday, 20th September:

Daily Skippers briefing at 09:30

First warning signal at 10:30

Last possible warning signal at 15:00

Price giving ceremony at 16:00 in Piazza Azzurra

7.1 Training Opportunity: All participants have access to training in the boats, according to a plan published on the ONB on Thursday morning at 09:00.

7.2 There will be an official skippers briefing (attendance is compulsory for a crewmember for each team) on Friday at 13.00.

7.3 Subsequent races will be started immediately after crew changes have finished after the finishing of the previous race. The crew change will be on the water as schedule in Appendix B.

8 Class flag

The Class Flag is the Sailing Champions League flag.

9 Race Area

Will be described later, see appendix E

10 Course

Appendix A shows the course and the order in which marks are to be rounded or passed and their required side.

11 Marks

11.1 Mark 1 is a red inflatable cylindrical mark.

11.2 Marks 2a and 2b, are red inflatable cylindrical marks.

11.3 The start mark is an orange buoy at the port end of the line. The orange buoy may be replaced by a service boat with an orange flag.

11.4 The finishing mark is an orange buoy at the starboard end of the line. The orange buoy may be replaced by a service boat with an orange flag on a staff.

11.5 Replacement mark is a yellow inflatable cylinder.

12 Start

12.1 The starting line will be between a staff displaying an orange flag on the race committee boat at the starboard end and either:

- (a) the course side of the port end inflatable starting mark, or
- (b) a staff displaying an orange flag on the service boat at the port end.

12.2 RRS 26 is amended as follows:

- (a) Warning signal: 3 minutes before the starting. The class flag will be displayed, with one sound signal;
- (b) Preparation signal: 2 minutes before the start signal flag "P" will be displayed, with one sound signal;
- (c) One-minute signal: 1 minute before the starting signal, signal flag "P", will be lowered, with one sound signal;
- (d) Starting signal: Class flag is lowered with one sound signal.

13 Change of course.

13.1 The Race committee may change mark 1 in the following way.

- (a) When rounding the gate:
 - (1) Displaying a yellow flag with repeated sound signals.
 - (a) This means: Mark M1 is replaced by a yellow mark.

14 Shortening the course

The course will not be shortened.

15 The finishing line.

15.1 The finishing line will be between a staff displaying an orange flag on the race committee boat at the port end and either:

- (a) the course side of the starboard end inflatable finishing mark, or
- (b) a staff displaying an orange flag on the service boat at the starboard end.

16 Boats change after finishing

- 16.1 After finishing each boats shall go to their port side, roll up the gib and turn to wind to allow crew change. The rib comes to the side and the team changes boats.
- 16.2 After changing, the crew has approx. 3 minutes to check the boat. After checking the boats, each team set up the battle flag to signalize that the team is ready to race. If any problem occurs, the white flag onboard has to be used.

17 Protest and request for redress

- 17.1 ISAF Addendum "Q" will be used for direct umpiring.
- 17.2 Breaches of the following sailing instruction will not be grounds for protest by a boat. Penalty for those infringements will be initiated by an umpire according to Addendum "Q"
- (a) 20.1 personal buoyancy
 - (b) B4.1 crew position
 - (c) B4.2 bowsprit position
- 17.3 There will be an International jury for the event. Their decisions cannot be appealed according to RRS 70.5

18 Target time

- 18.1 Target time for each race is 12-15 minutes.
- 18.2 Time limit for first boat finishing is 25 minutes.
- 18.3 Boat failing to finish within 5 min after the first boat sail the course and finishes, will be scored DNF. This change RRS 35, A4 and A5

19 Scoring

- 19.1 The low point system will be used under RSS
- (a) DNF, DNS, DSQ, RAF etc.. gives 9 point.
- 19.2 Three Flights are required by all competitors in order to constitute a championship.
- 19.3 Each boats score will be the sum of her scores for all races (no score will be excluded).
- 19.4 If at the end of the regatta, some of the competitors have sailed an uneven number of races, due to incomplete flights, the competitors missing a race will be scored according to RRS A10(a)
- 19.5 If a participant is unable to start a race because the organizer cannot supply a boat for them, the participant will receive an average score for this race, according to RRS A10(b).

Point System with 8 Boats racing:

1. Place	1 Points
2. Place	2 Points
3. Place	3 Points
4. Place	4 Points
5. Place	5 Points
6. Place	6 Points

7. Place	7 Points
8. Place	8 Points

Point System with 7 Boats racing:

1. Place	1 Points
2. Place	2,16 Points
3. Place	3,33 Points
4. Place	4,49 Points
5. Place	5,66 Points
6. Place	6,38 Points
7. Place	8 Points

Point System with 6 Boats racing:

1. Place	1 Points
2. Place	2,4 Points
3. Place	3,8 Points
4. Place	5,2 Points
5. Place	6,6 Points
6. Place	8 Points

SI 19, changes RRS 90.3 and Appendix A4.

20 Security

20.1 Each participant must wear a personal flotation device when racing. Excluded are briefly while changing or adjusting personal clothing. Wet suits and dry suits are not considered as a personal flotation device.

20.2 A boat that retires from the race shall immediately notify the race committee.

21 Replacement of crew and equipment

21.1 When a skipper or crew is unable to continue in the event, the IJ may authorize a change.

21.2 Substitution of damaged or lost equipment and repairs may only be done by the organizers repairmen, or under their management.

22 Official boats.

The official boats will be marked with white flags with the following text:

- Service Boat: "S"
- Umpire boat: " U "
- Press boat: "Press "

With bow stickers:

Repair boat: " R "

Transport Boats: " T1-T2-T3-T4-T5-T6-T7-T8 "

23 Electronic

23.1 While racing, a participant may not use any electronic devices except a watch for timing the start. If this watch has functions other than the clock, they must not be used.

24 Coaches and support boats

24.1 Coaches and support boats shall be marked with the club name or identify the club they are supporting and if any, shall register with the Organizing Authority before the start of the first race of the regatta.

24.2 Coaches and support boats must keep a minimum distance of 50 meters to any racing boat and will sail in a way so they do not make waves or swells in the racing area.

25 Damage

25.1 If there is a damage on a boat, the participant shall complete a damage report as described in AppendixD.

25.2 Each skipper is responsible for the damage or loss to their boat unless responsibility is otherwise assigned by the umpires or the IJ.

25.3 A white flag is on board of each boat to signal failures between races.

Appendices:

Appendix A: The course;

Appendix B: Handling the boats;

Appendix C: Advertising;

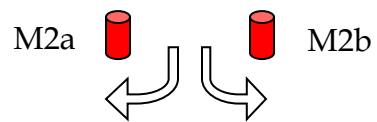
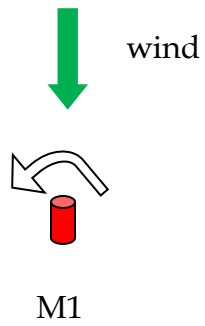
Appendix D: Damage Report;

Appendix E: Course area;

ADDENDUM Q - UMPIRED FLEET RACING;

Appendix A: The Course

Mark rounding order: Start – M1 – M2a/M2b – M1 – Finish



Appendix B: Handling the boats.

B 1 General

While all reasonable steps are taken to equalise the boats, variations will not be grounds for redress. This changes RRS 62.

B 2 Prohibited Actions

To prevent damage to the boat and crew the following is prohibited, except in an emergency or under the instructions of the race committee:

B2.1 To sail the boat in a way that can lead to damage to the boat or crew.

B2.2 Any substitution, change or assembly of spare parts and equipment, if they have not been supplied by the organizer.

B2.3 Using the equipment for purposes other than its intended use.

B 2-4 Moving the equipment from its normal position, except to fix it properly.

B 2-5 Write on the hull, cockpit or sail, perforation of the sails or installation of additional ticklers on the sails.

B3 Receipt and delivery of boats

B3.1 When a crew receives a boat, it has 3 minutes to control that the boat is ok and report possible errors to the race committee by flying the white flag.

After this, the race committee may start the procedure for the next race.

Information to the organizer after the warning signal has been displayed will not be reason a for postponement for repair.

B3.2 The crew sailing the boat shall report any damage or problem with the boat, before handing over a boat to the next crew. This can be done to the repair boat or the boat changing the crew by flying the white flag.

B4 Other rules that apply while boats are racing

B4.1 CREW POSITIONING

Except for momentary sail handling and/or repair needs, crew shall remain behind the mast while on deck.

Crew shall not stand and lean out over the cockpit safety lines or stern rails to promote roll tacking, roll gybing or to increase hiking leverage.

While seated on deck, crew shall have the base of their spine on the deck and inboard of the cockpit safety lines at all times.

Not more than three crew members may have their legs outboard of the sheerline.

When tacking or gybing, crew shall not hang on, push or pull the shrouds, mast, cockpit safety lines, stanchions or any other item to promote the manoeuvre.

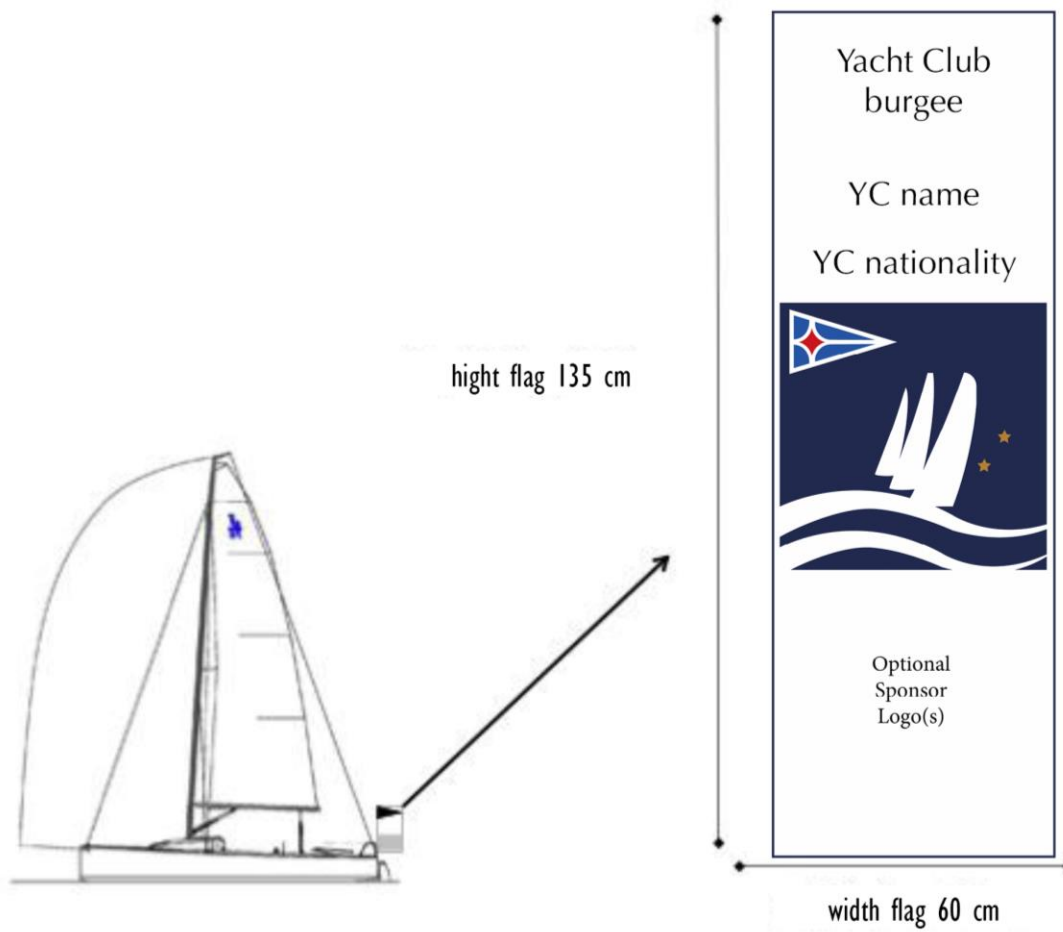
B4.2 Bowsprit

The bowsprit shall be fully retracted at all times except when the gennaker is being set, is set, or is being retrieved, and shall be retracted at the first reasonable opportunity after the retrieval. An extended bowsprit shall not be considered as part of the boat for the purposes of: Establishing an overlap, or establishing right of way, unless the gennaker is set.

B4.3 Standing rigging and lifelines

The setting of the shrouds, forestay and lifelines (security lines out of the cockpit) may only be changed in accordance with instructions from the race committee or a repairman. The backstay may be adjusted while sailing.

Appendix C: Advertising:



Appendix D: Damage Report:

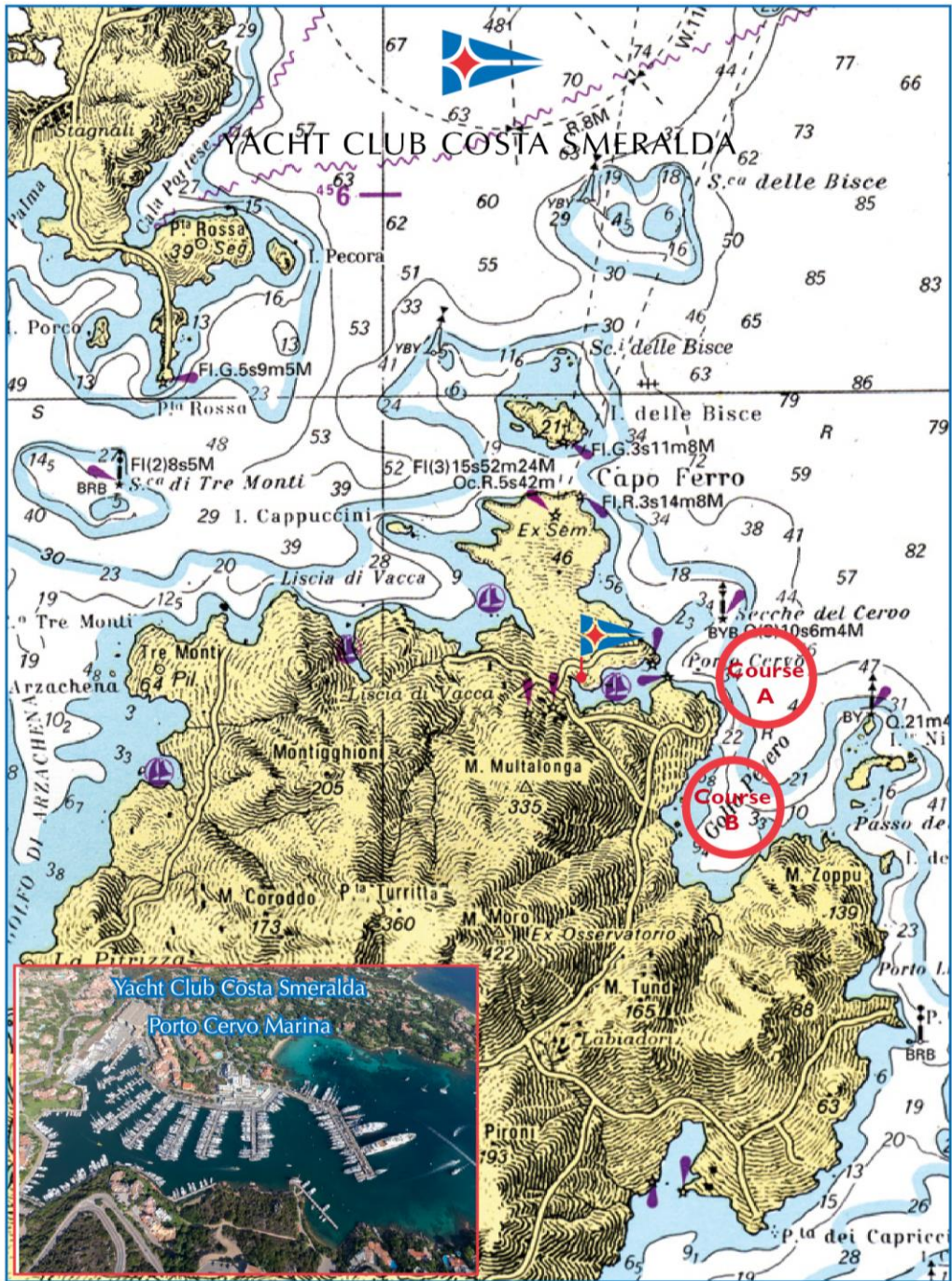
Note If there is a damage on one of the boats when you take over, please inform the race committee immediately and before the start of the next race	
Boats Number	
Responsible skipper/crew member	
Date and Time	
Description of damage	
Cause of Damage	
Signature Skipper/responsible crew member	

For Race Committee use:

Damage report received (Date and time)	
Estimated cost of repair work	
Comments	

Notice: in case of any damage every skipper is obliged to fill in a complete a damage report for the race committee and organizing authority

Appendix E: Course Area



ADDENDUM Q - UMPIRED FLEET RACING

These sailing instructions change the definition Proper Course, and rules 20, 28.2, 44, 60, 61, 62, 63, 64.1, 65, 66, 70, 78.3 and B5.

Q1 CHANGES TO RACING RULES

Additional changes to rules are made in instructions Q2, Q3, Q4, and Q5.

Q1.1 Changes to the Definitions and the Rules of Part 2 and Part 4

- (a) Add to the definition Proper Course: 'A boat taking a penalty or manoeuvring to take a penalty is not sailing a proper course.'
- (b) When rule 20 applies, the following arm signals are required in addition to the hails:
 - (1) for 'Room to tack', repeatedly and clearly pointing to windward; and
 - (2) for 'You tack', repeatedly and clearly pointing at the other boat and waving the arm to windward.

Instruction Q1.1(b) does not apply to boards.

Q1.2 Changes to Rules Involving Protests, Requests for Redress, Penalties and Exoneration

- (a) The first sentence of rule 44.1 is replaced with: 'A boat may take a One-Turn Penalty when she may have broken a rule of Part 2 (except rule 14 when she has caused damage or injury) or rule 31 or 42 while racing.'
- (b) For boards, the One-Turn Penalty is one 360 degree turn with no requirement for a tack or a gybe.
- (c) Rule 60.1 is replaced with 'A boat may protest another boat or request redress provided she complies with instructions Q2.1 and Q2.4.'
- (d) The third sentence of rule 61.1(a) and all of rule 61.1(a)(2) are deleted. Rule B5 is deleted.
- (e) Rules 62.1(a), (b) and (d) are deleted. In a race where this addendum applies, there shall be no scoring adjustments for redress given under any of these rules for a previous race.
- (f) Rule 64.1(a) is changed so that the provision for exonerating a boat may be applied by the umpires without a hearing, and it takes precedence over any conflicting instruction of this addendum.
- (g) Rules P1 to P4 shall not apply.

Q2 PROTESTS AND REQUESTS FOR REDRESS BY BOATS

Q2.1

While racing, a boat may protest another boat under a rule of Part 2 (except rule 14) or under rule 31 or 42; however, a boat may only protest under a rule of Part 2 for an incident in which she was involved. To do so she shall hail 'Protest' and conspicuously display a red flag at the first reasonable opportunity for each. She shall remove the flag before, or at the first reasonable opportunity after a boat involved in the incident has taken a penalty voluntarily or after an umpire's decision. However, a board need not display a red flag.

Q2.2

A boat that protests as provided in instruction Q2.1 is not entitled to a hearing. Instead, a boat involved in the incident may acknowledge breaking a rule by taking a One-Turn Penalty as described in rule 44.2. If the protested boat does not take a penalty voluntarily, an umpire will decide whether to penalize any boat and signal the decision as provided in instruction Q3.1.

Q2.3

At the finishing line, the race committee will inform the competitors about each boat's finishing place or scoring abbreviation. After this has been done for all boats, the race committee will promptly display flag B with one sound. Two minutes later flag B will be removed with one sound.

Q2.4

A boat intending to

- (a) protest another boat under a rule other than instruction Q3.2 or Q4.2(a), or a rule listed in instruction Q2.1,
- (b) protest another boat under rule 14 if there was contact that caused damage or injury, or
- (c) request redress

shall hail the race committee before or during the display of flag B. The same time limit applies to protests under instructions Q5.4 and Q5.5. The protest committee may extend the time limit if there is good reason to do so.

Q2.5

The race committee will promptly inform the protest committee about any protests or requests for redress made under instruction Q2.4.

Q3 UMPIRE SIGNALS AND IMPOSED PENALTIES

Q3.1

An umpire will signal a decision as follows:

- (a) A green and white flag with one long sound means 'No penalty.'
- (b) A red flag with one long sound means 'A penalty is imposed or remains outstanding.' The umpire will hail or signal to identify each such boat.
- (c) A black flag with one long sound means 'A boat is disqualified.' The umpire will hail or signal to identify the boat disqualified.

Q3.2

- (a) A boat penalized under instruction Q3.1(b) shall take a One-Turn Penalty as described in rule 44.2.
- (b) A boat disqualified under instruction Q3.1(c) shall promptly leave the course area.

Q4 PENALTIES AND PROTESTS INITIATED BY AN UMPIRE; ROUNDING OR PASSING MARKS

Q4.1

When a boat

- (a) breaks rule 31 and does not take a penalty,
- (b) breaks rule 42,
- (c) gains an advantage despite taking a penalty,
- (d) deliberately breaks a rule,
- (e) commits a breach of sportsmanship, or
- (f) fails to comply with instruction Q3.2 or to take a penalty when required to do so by an umpire,

an umpire may penalize her without a protest by another boat. The umpire may impose one or more One-Turn Penalties to be taken as described in rule 44.2, each signalled in accordance with instruction Q3.1(b), or disqualify her under instruction Q3.1(c), or report the incident to the protest committee for further action. If a boat is penalized under instruction Q4.1(f) for not taking a penalty or taking a penalty incorrectly, the original penalty is cancelled.

Q4.2

- (a) A boat shall not round or pass a mark on the wrong side. If she does so, she may correct her error as provided in rule 28.2 only if she does so before she rounds or passes the next mark or finishes.
- (b) When a boat breaks instruction Q4.2(a) and fails to correct her error before rounding or passing the next mark or finishing, an umpire may disqualify her under instruction Q3.1(c).

Q4.3

An umpire who decides, based on his own observation or a report received from any source, that a boat may have broken a rule, other than instruction Q3.2 or Q4.2(a) or a rule listed in instruction Q2.1, may inform the protest committee for its action under rule 60.3. However, he will not inform the protest committee of an alleged breach of rule 14 unless there is damage or injury.

Q5 PROTESTS; REQUESTS FOR REDRESS OR REOPENING; APPEALS; OTHER PROCEEDINGS

Q5.1

An umpire may take no proceedings of any kind in relation to any action or non-action.

Q5.2

A boat may not base an appeal on an alleged improper action, omission or decision of the umpires or the protest committee. In rule 66 the third sentence is changed to 'A party to the hearing may not ask for a reopening.'

Q5.3

- (a) Protests and requests for redress need not be in writing.
- (b) The protest committee may take evidence and conduct the hearing in any way it considers appropriate and may communicate its decision orally.
- (c) If the protest committee decides that a breach of a rule has had no effect on the outcome of the race, it may impose a penalty of points or fraction of points or make another arrangement it decides is equitable, which may be to impose no penalty.

Q5.4

The race committee will not protest a boat, except following a report under rule 43.1(c) or 78.3.

Q5.5

The protest committee may protest a boat under rule 60.3. However, it will not protest a boat for breaking instruction Q3.2 or Q4.2(a), a rule listed in instruction Q2.1, or rule 14 unless there is damage or injury.