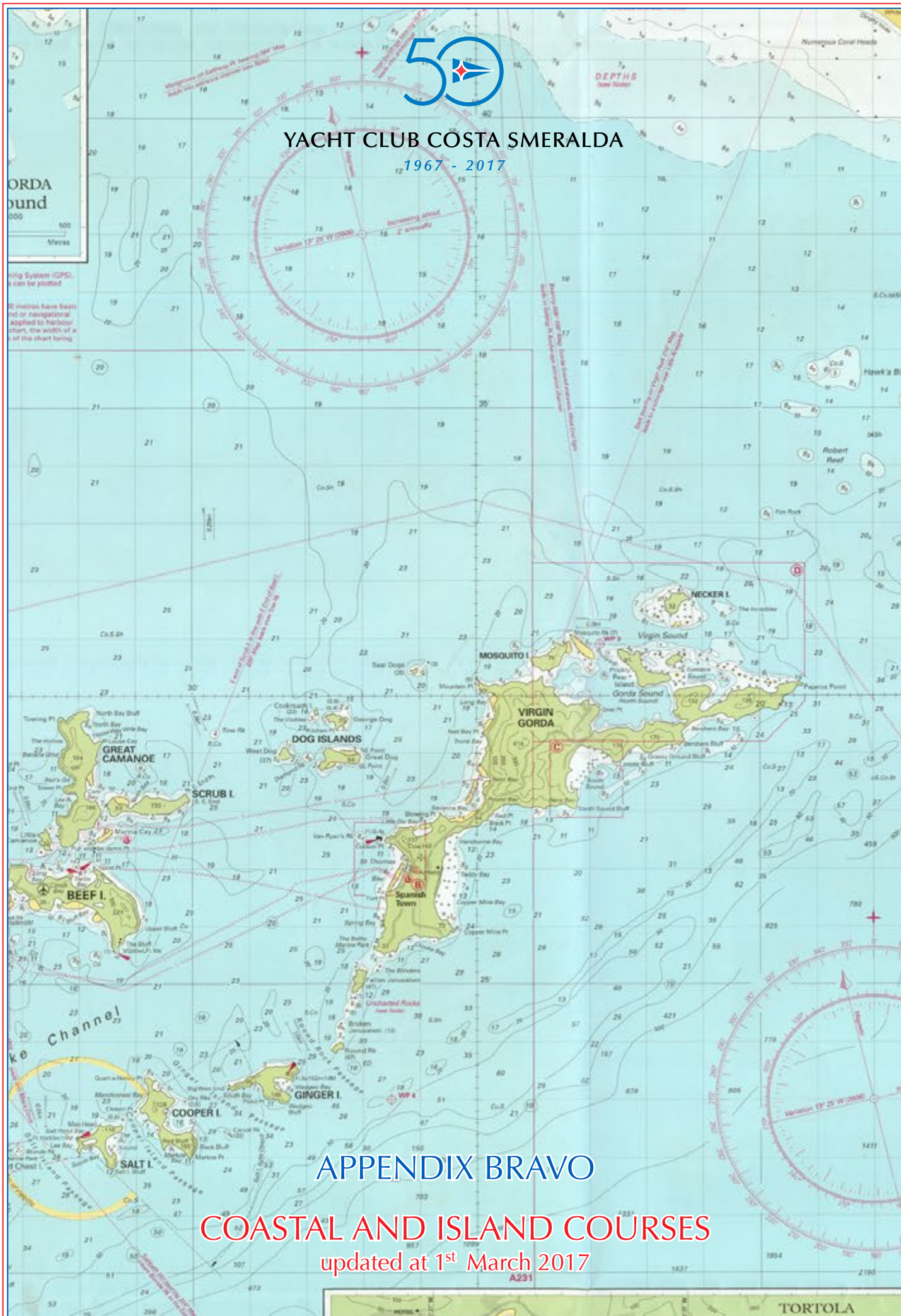




YACHT CLUB COSTA SMERALDA

1967 - 2017



APPENDIX BRAVO

COASTAL AND ISLAND COURSES

updated at 1st March 2017

A231

TORTOLA

Distances are indicated by Chalk Tapes, which are approximately the level of Lowest Astronomical Tide (L.A.T.).
Positions are indicated by World Geodetic System (WGS 84) Datum.
Underlined figures on drying banks denote heights in metres and decimals above Low Water.
Other heights shown are in metres above High Water.

Natural Scale of Lat 1° 30' N - 1° 00' N
Projections - Mercator

This chart has been compiled by S. M. Street & Co. Ltd. from the latest available information and is published by permission of the Hydrographic Office, Admiralty, London. It is published by the Admiralty as a part of the British Admiralty's Hydrographic Survey of the Eastern Caribbean. It is not to be used for navigation without the aid of a compass and a log.



COAST AND CHARTING SERVICE POSITIONS
The charting service positions are indicated by the letters A, B, C, D, E, F, G, H, I, J, K, L, M, N, O, P, Q, R, S, T, U, V, W, X, Y, Z, and are used to indicate the positions of the charting service vessels. The charting service vessels are used to maintain the accuracy of the chart and to provide a safe passage for the vessels.

COAST AND CHARTING SERVICE POSITIONS
The charting service positions are indicated by the letters A, B, C, D, E, F, G, H, I, J, K, L, M, N, O, P, Q, R, S, T, U, V, W, X, Y, Z, and are used to indicate the positions of the charting service vessels. The charting service vessels are used to maintain the accuracy of the chart and to provide a safe passage for the vessels.

COAST AND CHARTING SERVICE POSITIONS
The charting service positions are indicated by the letters A, B, C, D, E, F, G, H, I, J, K, L, M, N, O, P, Q, R, S, T, U, V, W, X, Y, Z, and are used to indicate the positions of the charting service vessels. The charting service vessels are used to maintain the accuracy of the chart and to provide a safe passage for the vessels.

COAST AND CHARTING SERVICE POSITIONS
The charting service positions are indicated by the letters A, B, C, D, E, F, G, H, I, J, K, L, M, N, O, P, Q, R, S, T, U, V, W, X, Y, Z, and are used to indicate the positions of the charting service vessels. The charting service vessels are used to maintain the accuracy of the chart and to provide a safe passage for the vessels.

COAST AND CHARTING SERVICE POSITIONS
The charting service positions are indicated by the letters A, B, C, D, E, F, G, H, I, J, K, L, M, N, O, P, Q, R, S, T, U, V, W, X, Y, Z, and are used to indicate the positions of the charting service vessels. The charting service vessels are used to maintain the accuracy of the chart and to provide a safe passage for the vessels.

COAST AND CHARTING SERVICE POSITIONS
The charting service positions are indicated by the letters A, B, C, D, E, F, G, H, I, J, K, L, M, N, O, P, Q, R, S, T, U, V, W, X, Y, Z, and are used to indicate the positions of the charting service vessels. The charting service vessels are used to maintain the accuracy of the chart and to provide a safe passage for the vessels.

COAST AND CHARTING SERVICE POSITIONS
The charting service positions are indicated by the letters A, B, C, D, E, F, G, H, I, J, K, L, M, N, O, P, Q, R, S, T, U, V, W, X, Y, Z, and are used to indicate the positions of the charting service vessels. The charting service vessels are used to maintain the accuracy of the chart and to provide a safe passage for the vessels.

COAST AND CHARTING SERVICE POSITIONS
The charting service positions are indicated by the letters A, B, C, D, E, F, G, H, I, J, K, L, M, N, O, P, Q, R, S, T, U, V, W, X, Y, Z, and are used to indicate the positions of the charting service vessels. The charting service vessels are used to maintain the accuracy of the chart and to provide a safe passage for the vessels.

COAST AND CHARTING SERVICE POSITIONS
The charting service positions are indicated by the letters A, B, C, D, E, F, G, H, I, J, K, L, M, N, O, P, Q, R, S, T, U, V, W, X, Y, Z, and are used to indicate the positions of the charting service vessels. The charting service vessels are used to maintain the accuracy of the chart and to provide a safe passage for the vessels.

COAST AND CHARTING SERVICE POSITIONS
The charting service positions are indicated by the letters A, B, C, D, E, F, G, H, I, J, K, L, M, N, O, P, Q, R, S, T, U, V, W, X, Y, Z, and are used to indicate the positions of the charting service vessels. The charting service vessels are used to maintain the accuracy of the chart and to provide a safe passage for the vessels.

COAST AND CHARTING SERVICE POSITIONS
The charting service positions are indicated by the letters A, B, C, D, E, F, G, H, I, J, K, L, M, N, O, P, Q, R, S, T, U, V, W, X, Y, Z, and are used to indicate the positions of the charting service vessels. The charting service vessels are used to maintain the accuracy of the chart and to provide a safe passage for the vessels.

COAST AND CHARTING SERVICE POSITIONS
The charting service positions are indicated by the letters A, B, C, D, E, F, G, H, I, J, K, L, M, N, O, P, Q, R, S, T, U, V, W, X, Y, Z, and are used to indicate the positions of the charting service vessels. The charting service vessels are used to maintain the accuracy of the chart and to provide a safe passage for the vessels.

COAST AND CHARTING SERVICE POSITIONS
The charting service positions are indicated by the letters A, B, C, D, E, F, G, H, I, J, K, L, M, N, O, P, Q, R, S, T, U, V, W, X, Y, Z, and are used to indicate the positions of the charting service vessels. The charting service vessels are used to maintain the accuracy of the chart and to provide a safe passage for the vessels.

COAST AND CHARTING SERVICE POSITIONS
The charting service positions are indicated by the letters A, B, C, D, E, F, G, H, I, J, K, L, M, N, O, P, Q, R, S, T, U, V, W, X, Y, Z, and are used to indicate the positions of the charting service vessels. The charting service vessels are used to maintain the accuracy of the chart and to provide a safe passage for the vessels.

COAST AND CHARTING SERVICE POSITIONS
The charting service positions are indicated by the letters A, B, C, D, E, F, G, H, I, J, K, L, M, N, O, P, Q, R, S, T, U, V, W, X, Y, Z, and are used to indicate the positions of the charting service vessels. The charting service vessels are used to maintain the accuracy of the chart and to provide a safe passage for the vessels.

COAST AND CHARTING SERVICE POSITIONS
The charting service positions are indicated by the letters A, B, C, D, E, F, G, H, I, J, K, L, M, N, O, P, Q, R, S, T, U, V, W, X, Y, Z, and are used to indicate the positions of the charting service vessels. The charting service vessels are used to maintain the accuracy of the chart and to provide a safe passage for the vessels.

COAST AND CHARTING SERVICE POSITIONS
The charting service positions are indicated by the letters A, B, C, D, E, F, G, H, I, J, K, L, M, N, O, P, Q, R, S, T, U, V, W, X, Y, Z, and are used to indicate the positions of the charting service vessels. The charting service vessels are used to maintain the accuracy of the chart and to provide a safe passage for the vessels.



1. Selection of the Course

The course will be signaled to competitors on the race committee boat by displaying, before or at the warning signal, the number of the course on a board. The course may be changed for each class before the preparatory signal for that class.

2. General Instructions

2.1 Starting and Finishing Areas

The starting and finishing areas will be located within a radius of approximately 2 nautical miles of the entrance of Gorda Sound. If the finishing line is to be in a location other than the starting line, the race committee will broadcast the finishing line location prior to the preparatory signal each day. For all courses, the written course description in section 2.8, takes precedence over the course diagram.

2.2 Starting Line

The starting line will be between a staff displaying an orange flag on the race committee boat at the starboard end of the line and the starting buoy at the port end. The starting buoy may be replaced by a service boat displaying an orange flag. In this case the starting line will be between the staffs displaying an orange flag on each boat. The race committee boat and/or service boat on the starting line may hold their position with the use of engines.

2.3 Finishing Line

The finishing line will be between a staff displaying an orange flag on the race committee boat at the port end of the line and the finishing buoy at the starboard end. The finishing buoy may be replaced by a service boat displaying an orange flag. In this case the finishing line will be between the staffs displaying an orange flag on each boat. The race committee boat and/or Service boat on the finishing line may hold their position with the use of engines.

2.4 Buoys

Buoys will be inflatable marks. The Sailing Instructions will provide information on the size, shape and color of the buoys. If a buoy is missing, or out of position, the race committee will, if possible, relocate it to its correct position or substitute with a new one. If a replacement buoy is not in position, the race committee will announce the original mark's latitude/longitude position on the race committee VHF channel, which yachts shall pass on the required side.

2.5 Buoys and Marks for the various courses:

Buoy ALPHA: buoy after the start.

The race committee may position an inflatable buoy at a bearing and distance (in nautical miles) from the starting line boat as displayed on a board. In this case, the race committee boat will hoist one of the following signals:

- **Red flag** with numbers on a board meaning: "the mark in the direction and distance indicated shall be left to port";
- **Green flag** with numbers on a board meaning: "the mark in the direction and distance indicated shall be left to starboard".

Buoy BRAVO: The race committee may position an inflatable buoy to be rounded after buoy ALPHA. The approximate location (latitude and longitude) and side to be rounded will be broadcast over the race committee VHF channel prior to the warning signal.

Buoy CHARLIE: The race committee may position an inflatable buoy for custom course #99 only. The approximate location (latitude and longitude) and side to be rounded will be broadcast over the race committee VHF channel prior to the warning signal.

Buoy DELTA: The race committee may position an inflatable buoy for custom course #99 only. The approximate location (latitude and longitude) and side to be rounded will be broadcast over the race committee VHF channel prior to the warning signal.

Mark ECHO: Dog Islands

Mark FOXTROT: Neker Island

Mark HOTEL: Ginger Island

Mark LIMA: Round Rock

Mark MIKE: Seal Dogs

Buoy OSCAR: Inflatable buoy located approximately 2nm north of Seal Dogs (approx. 18° 32.540 N/ 64° 26.050 W);

Buoy TANGO: Inflatable buoy located approximately 1nm west of Fallen Jerusalem Island (approx. 18° 25.125 N / 64° 28.213 W);

Buoy UNIFORM: Inflatable buoy located approximately 1nm northeast of N Bay Bluff on Great Camonoe Isla (approx. 18° 30.500 N / 64° 31.000 W).

2.6 Change of Course after the Start

At any mark the race committee may change the course with the following procedure:

- a) as the first boat is approaching the mark, a service boat in the proximity of the mark will hoist flag CHARLIE and a board indicating the name of the new mark of the course with several sound signals;
- b) the change of course will be broadcast over the Race Committee VHF channel. The new mark may be any other mark of the course selected for the day. The boat shall head from the mark where the change is indicated to the next mark of the course of the day.

2.7 Shortening of the course

All courses may be shortened at any mark in accordance with RRS 32.2 and International Code Flag "S". When the course is shortened at a mark, the finishing line shall be between the mark at which the course is shortened, which mark shall rank as the finishing mark, and a staff bearing the "S" flag on the finishing line boat.

2.8 Courses:

N. 01	Approx 14 nm	Start – ECHO pt – Finish
N. 02	Approx 14 nm	Start – ECHO stbd – Finish
N. 03	Approx 15 nm	Start– OSCAR pt – MIKE pt – OSCAR stbd – Finish
N. 04	Approx 15 nm	Start – OSCAR pt – MIKE stbd – OSCAR stbd – Finish
N. 05	Approx 18 nm	Start – ECHO pt – TANGO pt – MIKE stbd – Finish
N. 06	Approx 18 nm	Start – MIKE pt – TANGO stbd – ECHO stbd – Finish
N. 07	Approx 19 nm	Start – OSCAR pt – ECHO stbd – UNIFORM stbd – MIKE pt – OSCAR stbd – Finish
N. 08	Approx 19 nm	Start – OSCAR pt – MIKE stbd – UNIFORM pt – ECHO pt – OSCAR stbd – Finish
N. 09	Approx 19 nm	Start – OSCAR pt – MIKE stbd – ECHO pt – TANGO pt – Finish
N. 10	Approx 19 nm	Start – TANGO stbd – ECHO stbd – MIKE pt – OSCAR stbd – Finish
N. 11	Approx 23 nm	Start – ECHO pt – HOTEL pt – MIKE stbd – Finish
N. 12	Approx 23 nm	Start – MIKE pt – HOTEL stbd – ECHO stbd – Finish
N. 13	Approx 24 nm	Start – OSCAR pt – MIKE stbd – ECHO pt – HOTEL pt – Finish
N. 14	Approx 24 nm	Start – HOTEL stbd – ECHO stbd – MIKE pt – OSCAR stbd – Finish
N. 15	Approx 25 nm	Start – OSCAR pt – ECHO stbd – UNIFORM pt – TANGO pt – MIKE stbd – Finish
N. 16	Approx 25 nm	Start – MIKE pt – TANGO stbd – UNIFORM stbd – ECHO pt – OSCAR stbd – Finish
N. 17	Approx 25 nm	Start – ECHO stbd – LIMA pt – FOXTROT pt – Finish
N. 18	Approx 25 nm	Start – FOXTROT stbd – LIMA to stbd – ECHO pt – Finish
N. 19	Approx 27 nm	Start – ECHO pt – LIMA pt – FOXTROT pt – Finish
N. 20	Approx 27 nm	Start – FOXTROT stbd – LIMA stbd – ECHO stbd – Finish
N. 21	Approx 28 nm	Start – ECHO stbd – HOTEL pt – FOXTROT pt – Finish
N. 22	Approx 28 nm	Start – FOXTROT stbd – HOTEL stbd – ECHO pt – Finish
N. 23	Approx 29 nm	Start – ECHO pt – HOTEL pt – FOXTROT pt – Finish
N. 24	Approx 29 nm	Start– FOXTROT stbd – HOTEL stbd – ECHO stbd – Finish
N. 25	Approx 29 nm	Start – MIKE pt – LIMA pt – FOXTROT pt – OSCAR pt – Finish
N. 26	Approx 29 nm	Start – OSCAR stbd – FOXTROT stbd – LIMA stbd – MIKE stbd – Finish
N. 27	Approx 30 nm	Start – OSCAR pt – ECHO stbd – UNIFORM pt – HOTEL pt – MIKE stbd – Finish
N. 28	Approx 30 nm	Start – MIKE pt – HOTEL stbd – UNIFORM stbd – ECHO pt – OSCAR stbd – Finish

Course 99 (Custom Course): to be announced on the race committee VHF Channel

2.9 Marks for the various courses:

Mark ECHO “Dog Islands” includes George Dog, Great Dog, West Dog and Cockroach Island. Mark ECHO does not include Mark MIKE “Seal Dogs”. Virgin Gorda is considered a mark of the course and it is to be rounded on the appropriate side as indicated in the course diagram.

3 Communications:

3.1 The race committee may use VHF 72 to broadcast information such as signals made ashore, location of the race committee boat, courses to be sailed, bow or sail numbers of boats recalled, change of course, etc.... A time check before the warning signal for the first start each day may be transmitted by the race committee over VHF Channel 72 approximately 30 minutes before the warning signal each day.

3.2 Neither failure to receive or hear radio transmissions, nor failure to make them, nor delay or errors in them, will be grounds for requests for redress by competitors (Amends RRS 60.1 (b) and 62.1 (a)).

3.3 A boat shall neither make radio transmission while racing nor receive radio communications not available to all boats. This restriction also applies to mobile phones. Any means of communication is allowed and encouraged for collision avoidance purposes.



YACHT CLUB COSTA SMERALDA

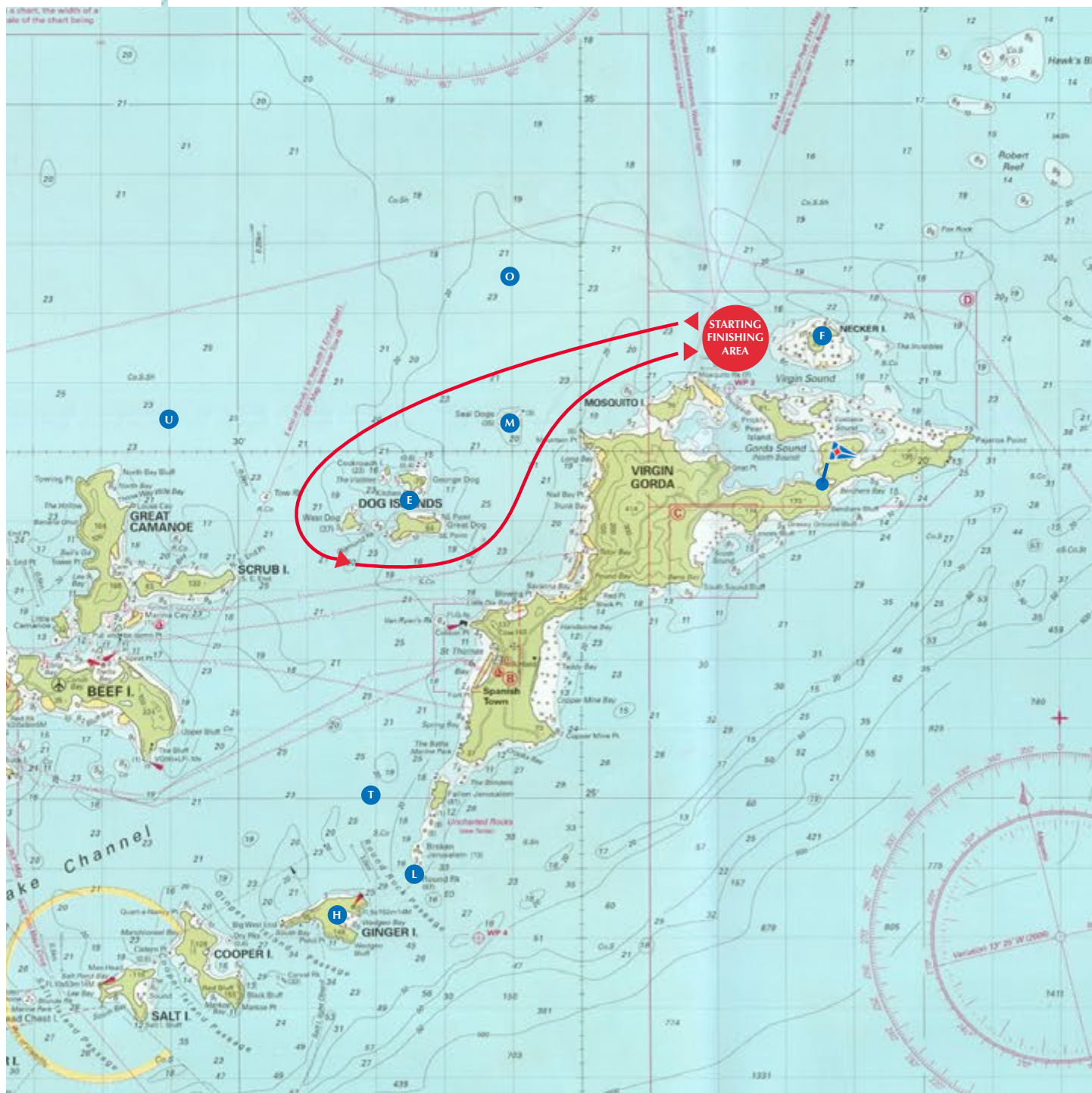
Virgin Gorda

COURSE N:

01

APPROX 14 n.m.

Start – ECHO pt – Finish



THE LENGTH OF THE COURSE IN MILES, THE COURSE MARKED, THE SYMBOLS AND THE POSITION OF THE MARKS ARE PURELY INDICATIVE





YACHT CLUB COSTA SMERALDA

Virgin Gorda

COURSE N:

02

APPROX 14 n.m.

Start – ECHO stbd – Finish



THE LENGTH OF THE COURSE IN MILES, THE COURSE MARKED, THE SYMBOLS AND THE POSITION OF THE MARKS ARE PURELY INDICATIVE





YACHT CLUB COSTA SMERALDA

Virgin Gorda

COURSE N:

03

APPROX 15 n.m.

Start – OSCAR pt – MIKE pt – OSCAR stbd – Finish



THE LENGTH OF THE COURSE IN MILES, THE COURSE MARKED, THE SYMBOLS AND THE POSITION OF THE MARKS ARE PURELY INDICATIVE





YACHT CLUB COSTA SMERALDA

Virgin Gorda

COURSE N:

04

APPROX 15 n.m.

Start – OSCAR pt – MIKE stbd – OSCAR stbd – Finish



THE LENGTH OF THE COURSE IN MILES, THE COURSE MARKED, THE SYMBOLS AND THE POSITION OF THE MARKS ARE PURELY INDICATIVE





YACHT CLUB COSTA SMERALDA

Virgin Gorda

COURSE N°:

05

APPROX 18 n.m.

Start – ECHO pt – TANGO pt – MIKE stbd – Finish



THE LENGTH OF THE COURSE IN MILES, THE COURSE MARKED, THE SYMBOLS AND THE POSITION OF THE MARKS ARE PURELY INDICATIVE





YACHT CLUB COSTA SMERALDA

Virgin Gorda

COURSE N°:

06

APPROX 18 n.m.

Start – MIKE pt – TANGO stbd – ECHO stbd – Finish



THE LENGTH OF THE COURSE IN MILES, THE COURSE MARKED, THE SYMBOLS AND THE POSITION OF THE MARKS ARE PURELY INDICATIVE



YACHT CLUB COSTA SMERALDA

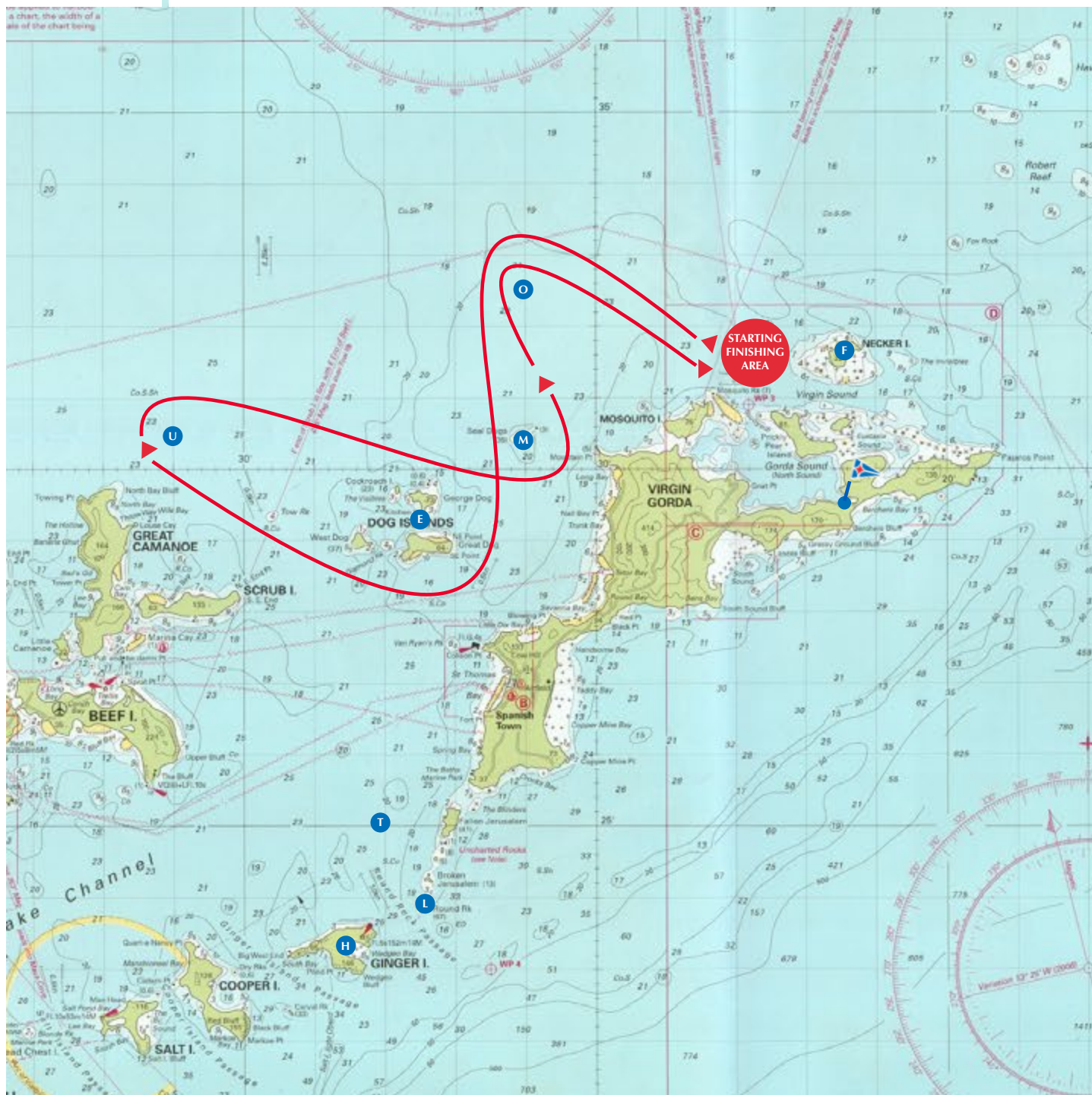
Virgin Gorda

COURSE N:

APPROX 19 n.m.

07

Start – OSCAR pt – ECHO stbd – UNIFORM stbd – MIKE pt – OSCAR stbd – Finish



THE LENGTH OF THE COURSE IN MILES, THE COURSE MARKED, THE SYMBOLS AND THE POSITION OF THE MARKS ARE PURELY INDICATIVE



YACHT CLUB COSTA SMERALDA

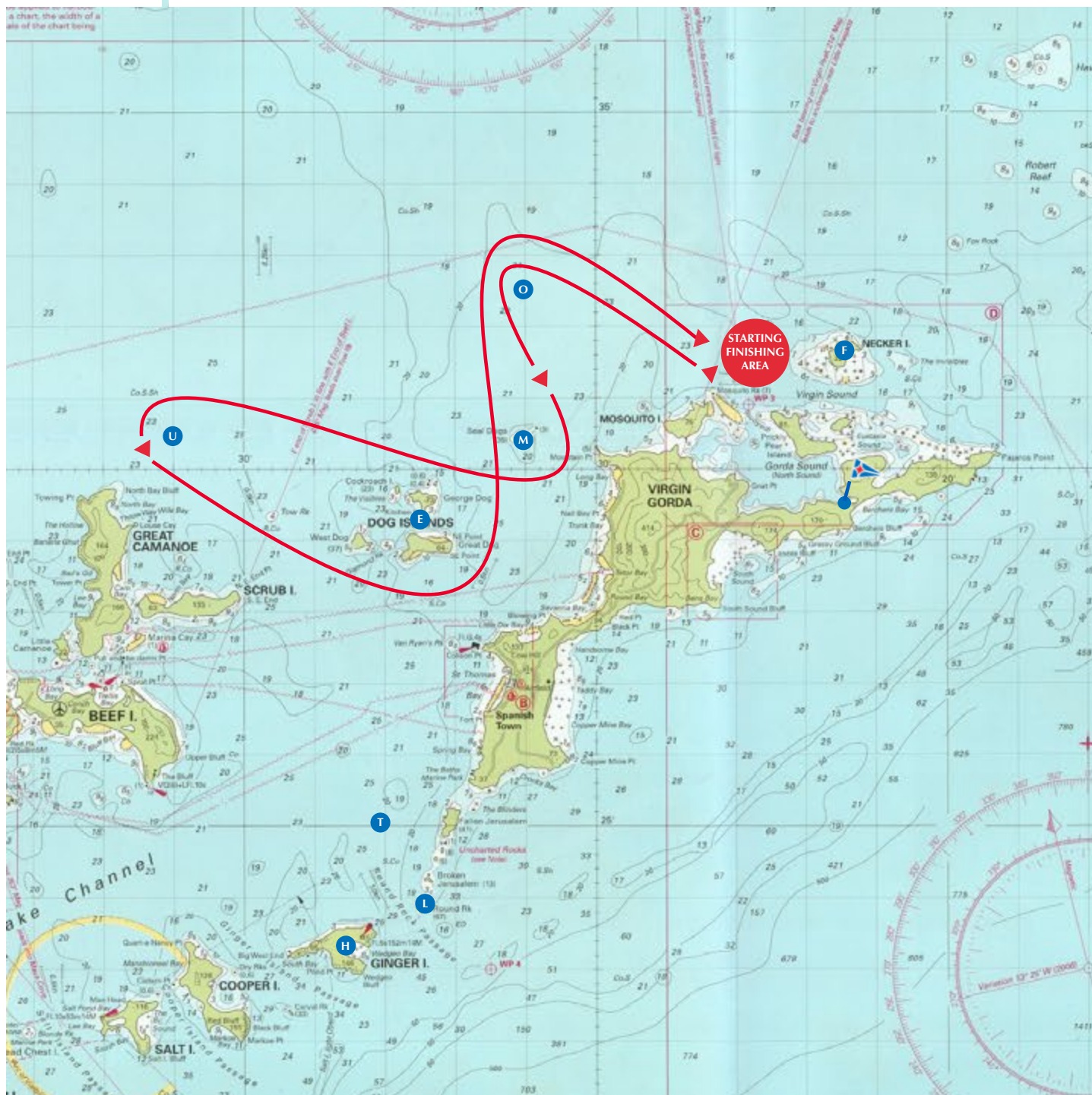
Virgin Gorda

COURSE N°:

08

APPROX 19 n.m.

Start – OSCAR pt – MIKE stbd – UNIFORM pt – ECHO pt –
OSCAR stbd - Finish



THE LENGTH OF THE COURSE IN MILES, THE COURSE MARKED, THE SYMBOLS AND THE POSITION OF THE MARKS ARE PURELY INDICATIVE



YACHT CLUB COSTA SMERALDA

Virgin Gorda

COURSE N:

09

APPROX 19 n.m.

Start – OSCAR pt – MIKE stbd – ECHO pt – TANGO pt – Finish



THE LENGTH OF THE COURSE IN MILES, THE COURSE MARKED, THE SYMBOLS AND THE POSITION OF THE MARKS ARE PURELY INDICATIVE



APPENDIX BRAVO
COASTAL AND ISLAND COURSES



YACHT CLUB COSTA SMERALDA

Virgin Gorda

COURSE N:

10

APPROX 19 n.m.

Start – TANGO stbd – ECHO stbd – MIKE pt – OSCAR stbd - Finish



THE LENGTH OF THE COURSE IN MILES, THE COURSE MARKED, THE SYMBOLS AND THE POSITION OF THE MARKS ARE PURELY INDICATIVE





YACHT CLUB COSTA SMERALDA

Virgin Gorda

COURSE N:

APPROX 23 n.m.

11

Start – ECHO pt – HOTEL pt – MIKE stbd – Finish



THE LENGTH OF THE COURSE IN MILES, THE COURSE MARKED, THE SYMBOLS AND THE POSITION OF THE MARKS ARE PURELY INDICATIVE





YACHT CLUB COSTA SMERALDA

Virgin Gorda

COURSE N°:

APPROX 23 n.m.

12

Start – MIKE pt – HOTEL stbd – ECHO stbd – Finish



THE LENGTH OF THE COURSE IN MILES, THE COURSE MARKED, THE SYMBOLS AND THE POSITION OF THE MARKS ARE PURELY INDICATIVE





YACHT CLUB COSTA SMERALDA

Virgin Gorda

COURSE N:

13

APPROX 24 n.m.

Start – OSCAR pt – MIKE stbd – ECHO pt – HOTEL pt – Finish



THE LENGTH OF THE COURSE IN MILES, THE COURSE MARKED, THE SYMBOLS AND THE POSITION OF THE MARKS ARE PURELY INDICATIVE





YACHT CLUB COSTA SMERALDA

Virgin Gorda

COURSE N:

14

APPROX 24 n.m.

Start – HOTEL stbd – ECHO stbd – MIKE pt – OSCAR stbd - Finish



THE LENGTH OF THE COURSE IN MILES, THE COURSE MARKED, THE SYMBOLS AND THE POSITION OF THE MARKS ARE PURELY INDICATIVE





YACHT CLUB COSTA SMERALDA

Virgin Gorda

COURSE N:

15

APPROX 25 n.m.

Start – OSCAR pt – ECHO stbd – UNIFORM pt – TANGO pt –
MIKE stbd – Finish



THE LENGTH OF THE COURSE IN MILES, THE COURSE MARKED, THE SYMBOLS AND THE POSITION OF THE MARKS ARE PURELY INDICATIVE



APPENDIX BRAVO
COASTAL AND ISLAND COURSES



YACHT CLUB COSTA SMERALDA

Virgin Gorda

COURSE N:

16

APPROX 25 n.m.

Start – MIKE pt – TANGO stbd – UNIFORM stbd – ECHO pt – OSCAR stbd – Finish



THE LENGTH OF THE COURSE IN MILES, THE COURSE MARKED, THE SYMBOLS AND THE POSITION OF THE MARKS ARE PURELY INDICATIVE





YACHT CLUB COSTA SMERALDA

Virgin Gorda

COURSE N:

APPROX 25 n.m.

17

Start – ECHO stbd – LIMA pt – FOXTROT pt – Finish



THE LENGTH OF THE COURSE IN MILES, THE COURSE MARKED, THE SYMBOLS AND THE POSITION OF THE MARKS ARE PURELY INDICATIVE





YACHT CLUB COSTA SMERALDA

Virgin Gorda

COURSE N:

APPROX 25 n.m.

18

Start – FOXTROT stbd – LIMA to stbd – ECHO pt – Finish



THE LENGTH OF THE COURSE IN MILES, THE COURSE MARKED, THE SYMBOLS AND THE POSITION OF THE MARKS ARE PURELY INDICATIVE





YACHT CLUB COSTA SMERALDA

Virgin Gorda

COURSE N:

19

APPROX 27 n.m.

Start – ECHO pt – LIMA pt – FOXTROT pt – Finish



THE LENGTH OF THE COURSE IN MILES, THE COURSE MARKED, THE SYMBOLS AND THE POSITION OF THE MARKS ARE PURELY INDICATIVE





YACHT CLUB COSTA SMERALDA

Virgin Gorda

COURSE N:

20

APPROX 27 n.m.

Start – FOXTROT stbd – LIMA stbd – ECHO stbd – Finish



THE LENGTH OF THE COURSE IN MILES, THE COURSE MARKED, THE SYMBOLS AND THE POSITION OF THE MARKS ARE PURELY INDICATIVE





YACHT CLUB COSTA SMERALDA

Virgin Gorda

COURSE N:

21

APPROX 28 n.m.

Start – ECHO stbd – HOTEL pt – FOXTROT pt – Finish



THE LENGTH OF THE COURSE IN MILES, THE COURSE MARKED, THE SYMBOLS AND THE POSITION OF THE MARKS ARE PURELY INDICATIVE





YACHT CLUB COSTA SMERALDA

Virgin Gorda

COURSE N:

22

APPROX 28 n.m.

Start – FOXTROT stbd – HOTEL stbd – ECHO pt – Finish



THE LENGTH OF THE COURSE IN MILES, THE COURSE MARKED, THE SYMBOLS AND THE POSITION OF THE MARKS ARE PURELY INDICATIVE





YACHT CLUB COSTA SMERALDA

Virgin Gorda

COURSE N:

23

APPROX 29 n.m.

Start – ECHO pt – HOTEL pt – FOXTROT pt – Finish



THE LENGTH OF THE COURSE IN MILES, THE COURSE MARKED, THE SYMBOLS AND THE POSITION OF THE MARKS ARE PURELY INDICATIVE



YACHT CLUB COSTA SMERALDA

Virgin Gorda

COURSE N:

24

APPROX 29 n.m.

Start – FOXTROT stbd – HOTEL stbd – ECHO stbd – Finish



THE LENGTH OF THE COURSE IN MILES, THE COURSE MARKED, THE SYMBOLS AND THE POSITION OF THE MARKS ARE PURELY INDICATIVE



YACHT CLUB COSTA SMERALDA

Virgin Gorda

COURSE N:

25

APPROX 29 n.m.

Start – MIKE pt – LIMA pt – FOXTROT pt – OSCAR pt – Finish



THE LENGTH OF THE COURSE IN MILES, THE COURSE MARKED, THE SYMBOLS AND THE POSITION OF THE MARKS ARE PURELY INDICATIVE





YACHT CLUB COSTA SMERALDA

Virgin Gorda

COURSE N:

26

APPROX 29 n.m.

Start – OSCAR stbd – FOXTROT stbd – LIMA stbd – MIKE stbd - Finish



THE LENGTH OF THE COURSE IN MILES, THE COURSE MARKED, THE SYMBOLS AND THE POSITION OF THE MARKS ARE PURELY INDICATIVE





YACHT CLUB COSTA SMERALDA

Virgin Gorda

COURSE N:

27

APPROX 30 n.m.

Start – OSCAR pt – ECHO stbd – UNIFORM pt – HOTEL pt –
MIKE stbd – Finish



THE LENGTH OF THE COURSE IN MILES, THE COURSE MARKED, THE SYMBOLS AND THE POSITION OF THE MARKS ARE PURELY INDICATIVE





YACHT CLUB COSTA SMERALDA

Virgin Gorda

COURSE N:

28

APPROX 30 n.m.

Start – MIKE pt – HOTLE stbd – UNIFORM stbd – ECHO pt –
OSCAR stbd – Finish



THE LENGTH OF THE COURSE IN MILES, THE COURSE MARKED, THE SYMBOLS AND THE POSITION OF THE MARKS ARE PURELY INDICATIVE





YACHT CLUB COSTA SMERALDA

Virgin Gorda

COURSE N:

99

CUSTOM CURSE:

to be announced on the race committee VHF Channel



THE LENGTH OF THE COURSE IN MILES, THE COURSE MARKED, THE SYMBOLS AND THE POSITION OF THE MARKS ARE PURELY INDICATIVE



YACHT CLUB COSTA SMERALDA

Virgin Gorda

YCCS Marina & Clubhouse Services

t. +1 284 393 2000 | **mob.** +1 284 346 6262 | **VHF** 08 | **e.** reception@yccs.vg
For after hours, 24/7: +1 284 346 6262

P.O. box 132 | North Sound, Virgin Gorda | British Virgin Islands VG1150

Coordinates: 18 29' 564" N | 64 21' 662" W

www.yccs.com