



YACHT CLUB COSTA SMERALDA

Virgin Gorda



APPENDIX BRAVO

COASTAL AND ISLAND COURSES

updated at 9th March 2016



Vertical Scale at Lat 18° 30' N - 18° 00' N

The chart has been compiled by N. B. M. from the following sources: British Admiralty Charts, and a number of other charts. It is the responsibility of the user to verify the accuracy of the chart against the latest edition of the charts mentioned above.

VIRGIN GORDA
South Sound

SCALE 1:20,000

VIRGIN GORDA
Virgin Gorda Yacht Harbour

SCALE 1:10,000

TORTOLA
Road Harbour
& Approaches

SCALE 1:20,000

Soundings

0	0	1	2
3	4	5	6
7	8	9	10
11	12	13	14
15	16	17	18
19	20	21	22
23	24	25	26
27	28	29	30
31	32	33	34
35	36	37	38
39	40	41	42
43	44	45	46
47	48	49	50
51	52	53	54
55	56	57	58
59	60	61	62
63	64	65	66
67	68	69	70
71	72	73	74
75	76	77	78
79	80	81	82
83	84	85	86
87	88	89	90
91	92	93	94
95	96	97	98
99	100	101	102
103	104	105	106
107	108	109	110
111	112	113	114
115	116	117	118
119	120	121	122
123	124	125	126
127	128	129	130
131	132	133	134
135	136	137	138
139	140	141	142
143	144	145	146
147	148	149	150
151	152	153	154
155	156	157	158
159	160	161	162
163	164	165	166
167	168	169	170
171	172	173	174
175	176	177	178
179	180	181	182
183	184	185	186
187	188	189	190
191	192	193	194
195	196	197	198
199	200	201	202
203	204	205	206
207	208	209	210
211	212	213	214
215	216	217	218
219	220	221	222
223	224	225	226
227	228	229	230
231	232	233	234
235	236	237	238
239	240	241	242
243	244	245	246
247	248	249	250

VISSAGE

From Tortola to Virgin Gorda:
 1. Tortola to Virgin Gorda
 2. Tortola to Anegada
 3. Tortola to St. John
 4. Tortola to St. Thomas

VISSAGE

From Anegada to Virgin Gorda:
 1. Anegada to Virgin Gorda
 2. Anegada to St. John
 3. Anegada to St. Thomas

VISSAGE

From Virgin Gorda to Tortola:
 1. Virgin Gorda to Tortola
 2. Virgin Gorda to St. John
 3. Virgin Gorda to St. Thomas



YACHT CLUB COSTA SMERALDA

Virgin Gorda

1. **Selection of the Course**

The course will be signalled to competitors by the Race Committee boat by displaying, before or at the warning signal, the number of the course on a board. The course may be changed for each group before the preparatory signal for that group.

2. **General Instructions**

2.1 **Starting and Finishing Areas**

The starting and finishing areas will be located within a radius of approximately 2 nautical miles of the entrance of North Sound Bay. If the finishing line is to be in a location other than the starting line, the race committee will broadcast the finishing line location prior to the first prep signal each day. **For all courses, the written course description, Section 2.8, takes precedence over the course diagram.**

2.2 **Starting Line**

The starting line will be between a staff displaying an orange flag on the Race Committee Boat at the starboard end of the line and the starting buoy at the port end. The starting buoy may be replaced by a Service boat displaying an orange flag. In this case the starting line will be between the staffs displaying an orange flag on each boat. The Race Committee Boat and/or Service boat on the starting line may hold their position with the use of engines.

2.3 **Finishing Line**

The finishing line will be between a staff displaying an orange flag on the Race Committee Boat at the port end of the line and the finishing buoy at the starboard end.

The finishing buoy may be replaced by a Service boat displaying an orange flag. In this case the finishing line will be between the staffs displaying an orange flag on each boat. The Race Committee Boat and/or Service boat on the finishing line may hold their position with the use of engines.

2.4 **Buoys**

Buoys will be inflatable marks. Further information will be defined in the Sailing Instructions.

If a buoy is missing or out of position the race committee will, if possible, replace it in its correct position or substitute with a new one. If a replacement buoy is not in position, the race committee will announce the original mark's latitude/longitude position on the race committee VHF channel, which yachts shall pass on the required side.

2.5 **Buoys and Marks for the various courses:**

Buoy ALPHA: buoy after the start.

The Race Committee may position an inflatable buoy at a distance and bearing from the starting line as displayed on a board. In this case, the Race Committee boat will hoist one of the following signals:

- **Red flag** with numbers on a board meaning: "the mark in the direction indicated shall be left to port";
- **Green flag** with numbers on a board meaning: "the mark in the direction indicated shall be left to starboard".

Buoy BRAVO: The Race Committee may position an inflatable buoy to be rounded after buoy Alfa. The approximate location (latitude and longitude) and side to be rounded will be broadcast over the race committee VHF channel prior to the warning signal.

Buoy CHARLIE: The Race Committee may position an inflatable buoy for Custom course #13 only. The approximate location (latitude and longitude) and side to be rounded will be broadcast over the race committee VHF channel prior to the warning signal.

Buoy DELTA: The Race Committee may position an inflatable buoy for Custom course #13 only. The approximate location (latitude and longitude) and side to be rounded will be broadcast over the race committee VHF channel prior to the warning signal.

Mark ECHO: Dog Islands;

Mark FOXTROT: Neker Island;

Mark HOTEL: Ginger Island;

Mark INDIO: Anegada Island;

Mark LIMA: Round Rock;

Mark MIKE: Seal Dogs.



YACHT CLUB COSTA SMERALDA

Virgin Gorda

2.6 Change of Course after the Start

At any mark the Race Committee may change the course with the following procedure:

- a) before the first boat is approaching the mark a service boat in the proximity of the mark will hoist flag CHARLIE and a board indicating the name of the new mark of the course with several sound signals;
- b) the change of course will be transmitted by radio on VHF channel 72. The new mark may be any other mark of the course selected for the day. The boat shall head from the mark where the change is indicated to the next mark of the course of the day.

2.7 Shortening of the course

All courses may be shortened at any mark in accordance with RRS 32.2 and ICF "S". When the course is shortened at a mark, the finishing line shall be between the mark at which the course is shortened, which mark shall rank as the finishing mark and a staff bearing the "S" flag and a blue flag on the finishing boat.

2.8 Courses:

N. 01 | Approx 14 n.m.: **Start** – ECHO to port – **Finish**;

N. 02 | Approx 14 n.m.: **Start** – ECHO to starboard – **Finish**;

N. 03 | Approx 25 n.m.: **Start** – ECHO to starboard - LIMA to port – FOXTROT to port- **Finish**;

N. 04 | Approx 25 n.m.: **Start** – FOXTROT to starboard – LIMA to starboard – ECHO to port – **Finish**;

N. 05 | Approx 27 n.m.: **Start** – ECHO to port – LIMA to port - FOXTROT to port - **Finish**;

N. 06 | Approx 27 n.m.: **Start** – FOXTROT to starboard – LIMA to starboard – ECHO to starboard – **Finish**;

N. 07 | Approx 28 n.m.: **Start** – ECHO to starboard – HOTEL to port – FOXTROT to port – **Finish**;

N. 08 | Approx 28 n.m.: **Start** – FOXTROT to starboard – HOTEL to starboard – ECHO to port – **Finish**;

N. 09 | Approx 29 n.m.: **Start** – ECHO to port – HOTEL to port – FOXTROT to port – **Finish**;

N. 10 | Approx 29 n.m.: **Start** – FOXTROT to starboard – HOTEL to starboard – ECHO to starboard – **Finish**;

N. 11 | Approx 43 n.m.: **Start** – INDIO to starboard – **Finish**;

N. 12 | Approx 43 n.m.: **Start** – INDIO to port – **Finish**;

N. 13 | Custom Course: to be announced on the Race Committee VHF Channel.

2.9 Marks for the various courses:

The Mark ECHO "Dog Islands" includes George Dog, Great Dog, West Dog and Cockroach Island. Mark ECHO does not include Mark MIKE "Seal Dogs". Mark MIKE may be used as a separate mark of the course for Course #13 (Custom Course). Virgin Gorda is considered a mark of the course and it is to be rounded on the appropriate side as indicated in the course diagram.

3 Communications:

3.1 The race Committee may use VHF 72 to broadcast information such as signals made ashore, location of the Race Committee Boat, bow or sail numbers of boats recalled, change of course etc. A time check may be transmitted by the Race Committee over VHF Channel 72 approx. 30 minutes before the first warning signal each day.

3.2 Neither failure to receive or hear radio transmissions nor failure to make them, nor delay or errors in them, will be grounds for requests for redress by competitors [Amends RRS 60.1 (b) and 62.1 (a)].

3.3 A boat shall neither make radio transmission while racing nor receive radio communications not available to all boats. This restriction also applies to mobile phones. For collision avoidance purposes all communication systems are allowed and Captain to Captain communications are encouraged.



YACHT CLUB COSTA SMERALDA

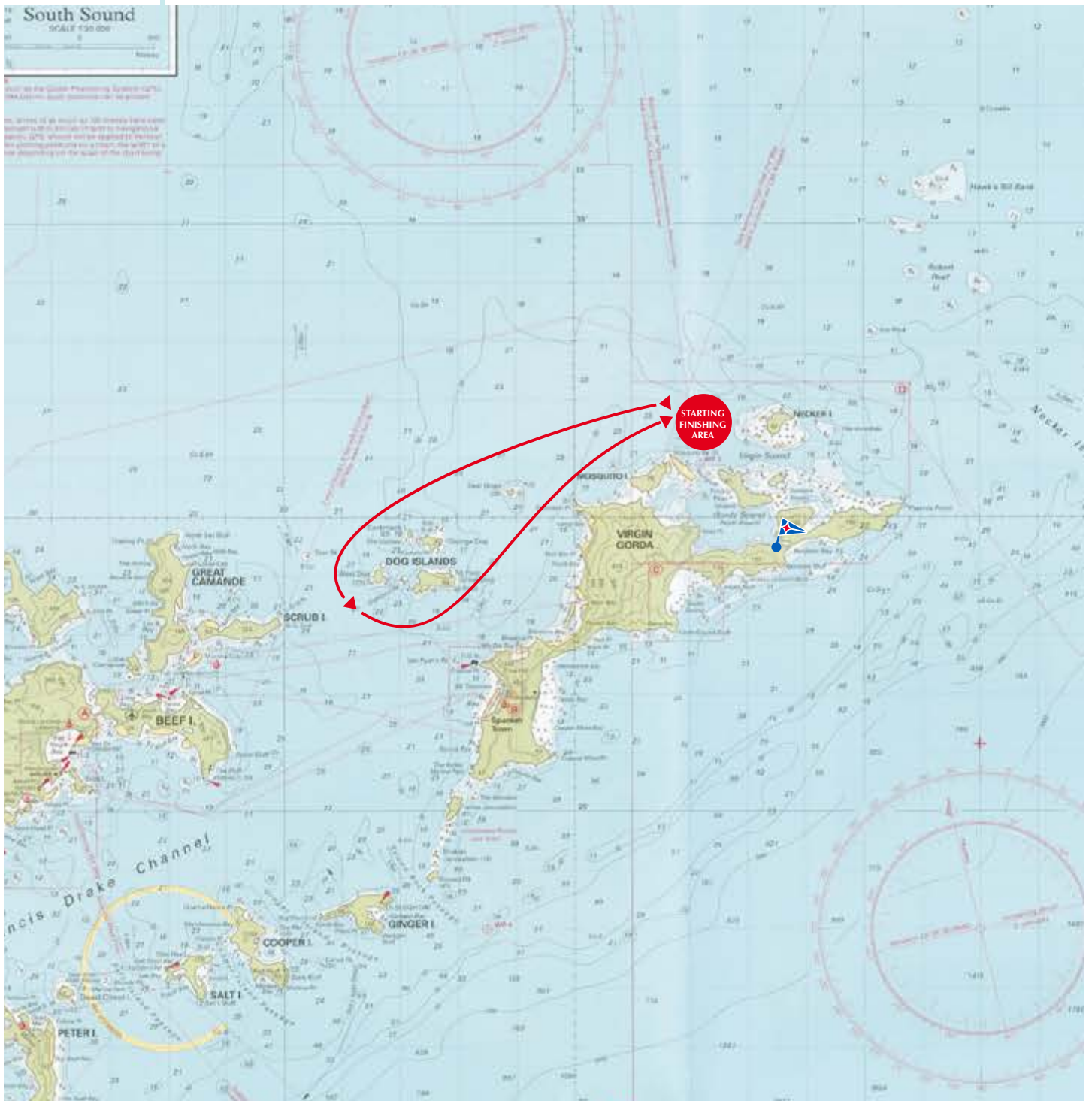
Virgin Gorda

COURSE N.:

01

APPROX 14 n.m

START - ECHO to port - FINISH



THE LENGTH OF THE COURSE IN MILES, THE COURSE MARKED, THE SYMBOLS AND THE POSITION OF THE MARKS ARE PURELY INDICATIVE

APPENDIX BRAVO COASTAL AND ISLAND COURSES



YACHT CLUB COSTA SMERALDA

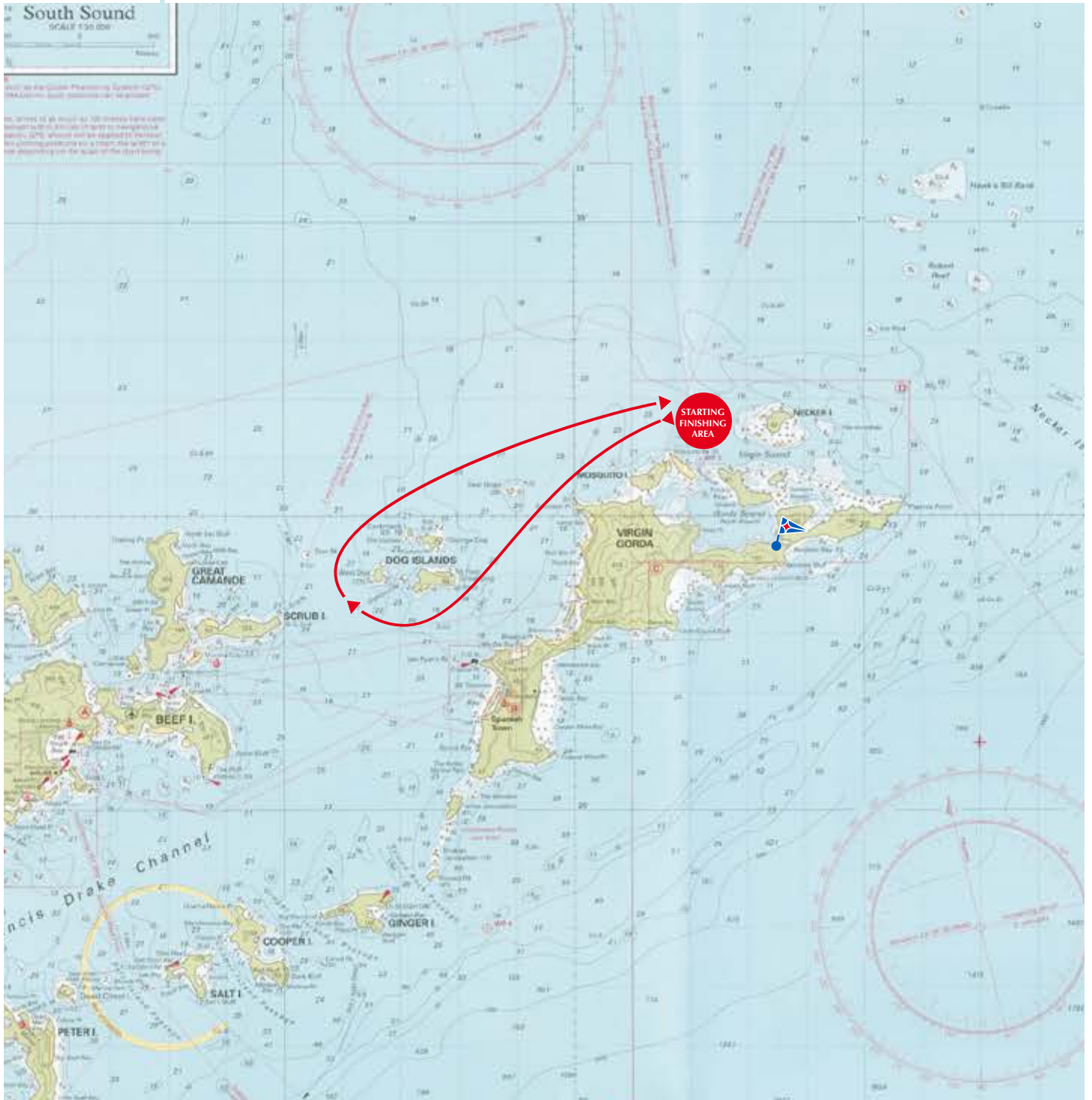
Virgin Gorda

COURSE N.:

02

APPROX 14 n.m

START - ECHO to starboard - FINISH



THE LENGTH OF THE COURSE IN MILES, THE COURSE MARKED, THE SYMBOLS AND THE POSITION OF THE MARKS ARE PURELY INDICATIVE

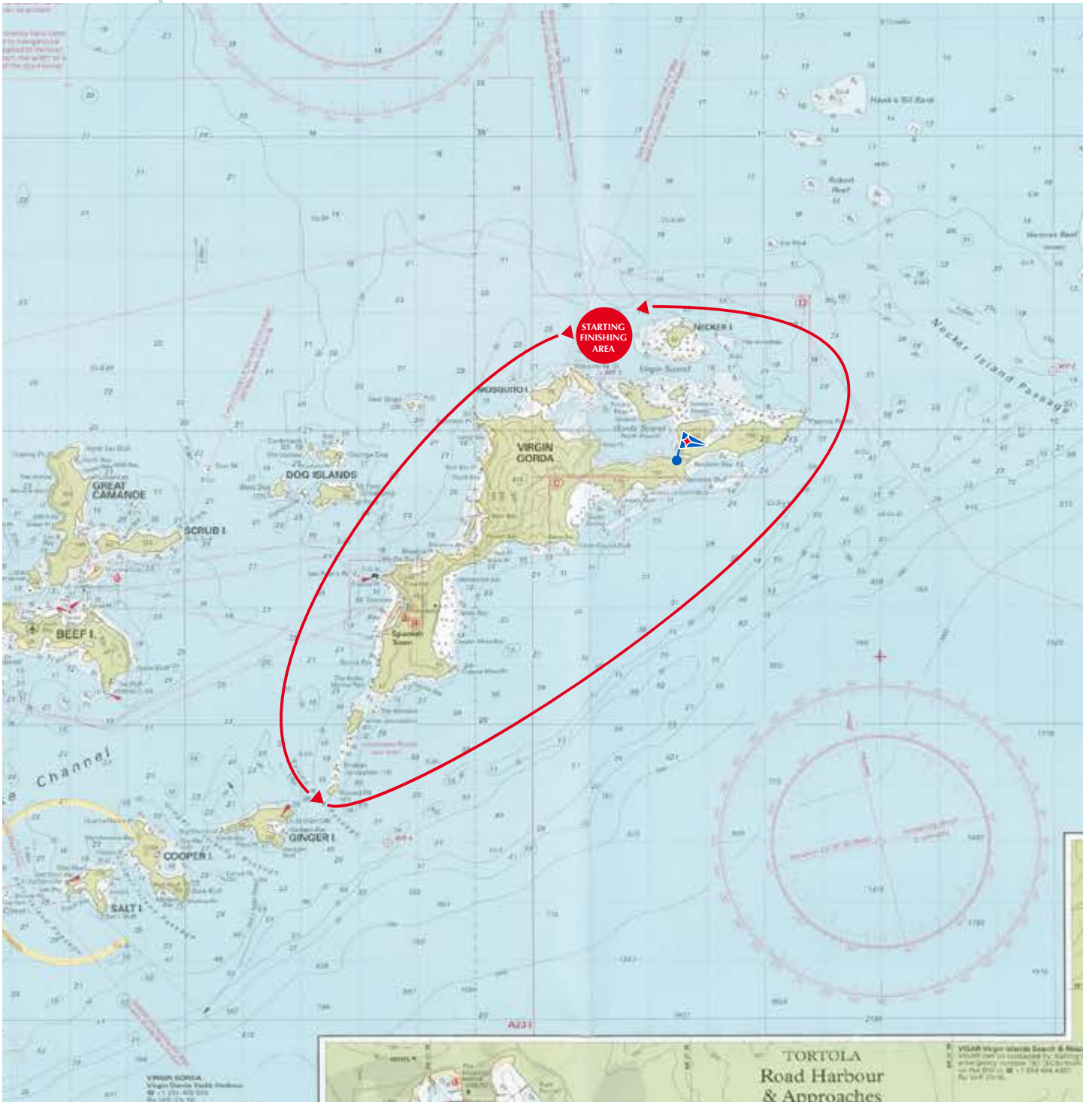


YACHT CLUB COSTA SMERALDA
Virgin Gorda

COURSE N.:
03

APPROX 25 n.m

START - ECHO to starboard - LIMA to port - FOXTROT to port - FINISH



THE LENGTH OF THE COURSE IN MILES, THE COURSE MARKED, THE SYMBOLS AND THE POSITION OF THE MARKS ARE PURELY INDICATIVE

SPR 2018 V
SPR 2018 V
SPR 2018 V
SPR 2018 V

APPENDIX BRAVO
COASTAL AND ISLAND COURSES



YACHT CLUB COSTA SMERALDA

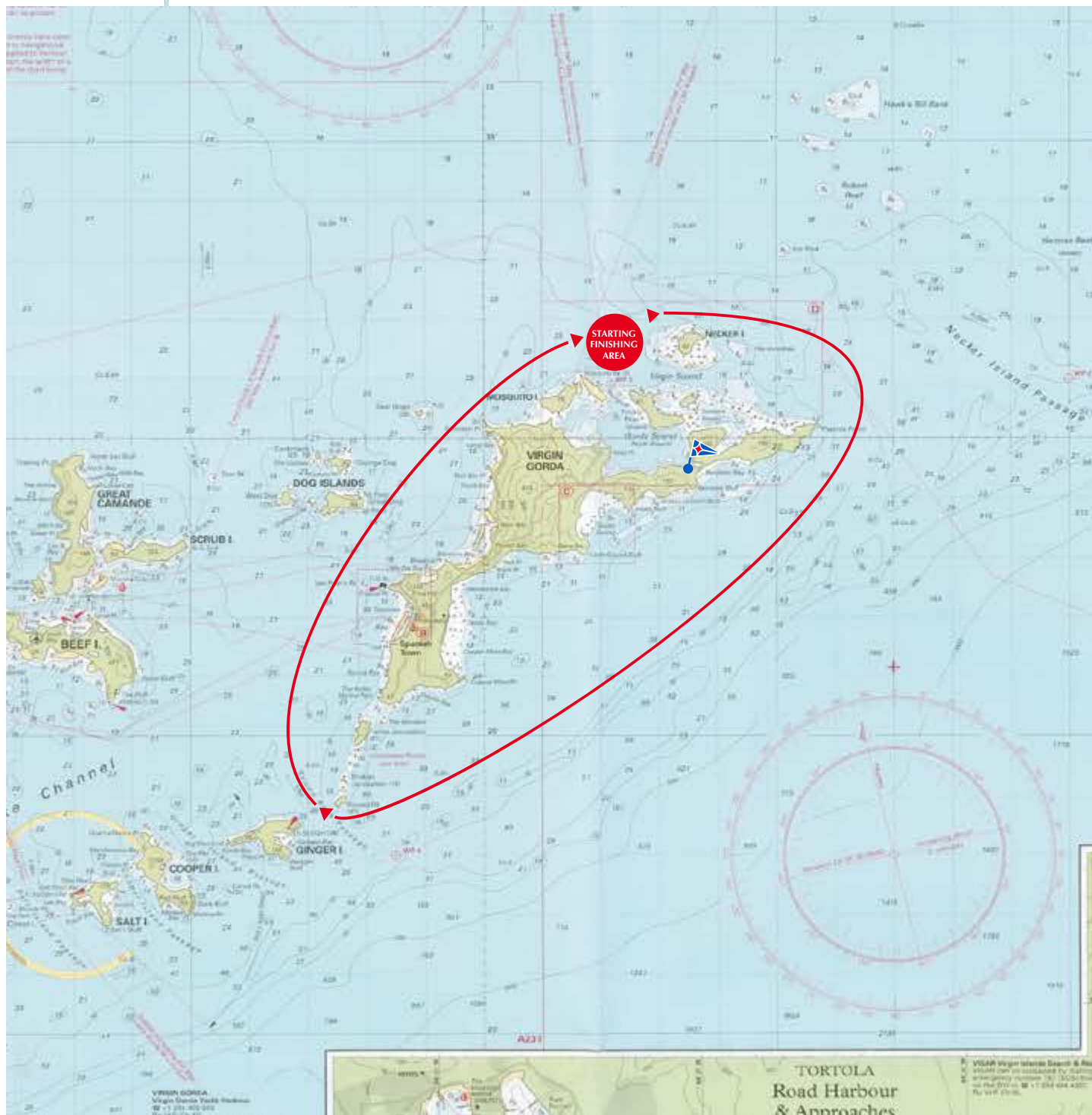
Virgin Gorda

COURSE N.:

04

APPROX 25 n.m

START - FOXTROT to starboard - LIMA to starboard - ECHO to port - FINISH



THE LENGTH OF THE COURSE IN MILES, THE COURSE MARKED, THE SYMBOLS AND THE POSITION OF THE MARKS ARE PURELY INDICATIVE



APPENDIX BRAVO COASTAL AND ISLAND COURSES



YACHT CLUB COSTA SMERALDA

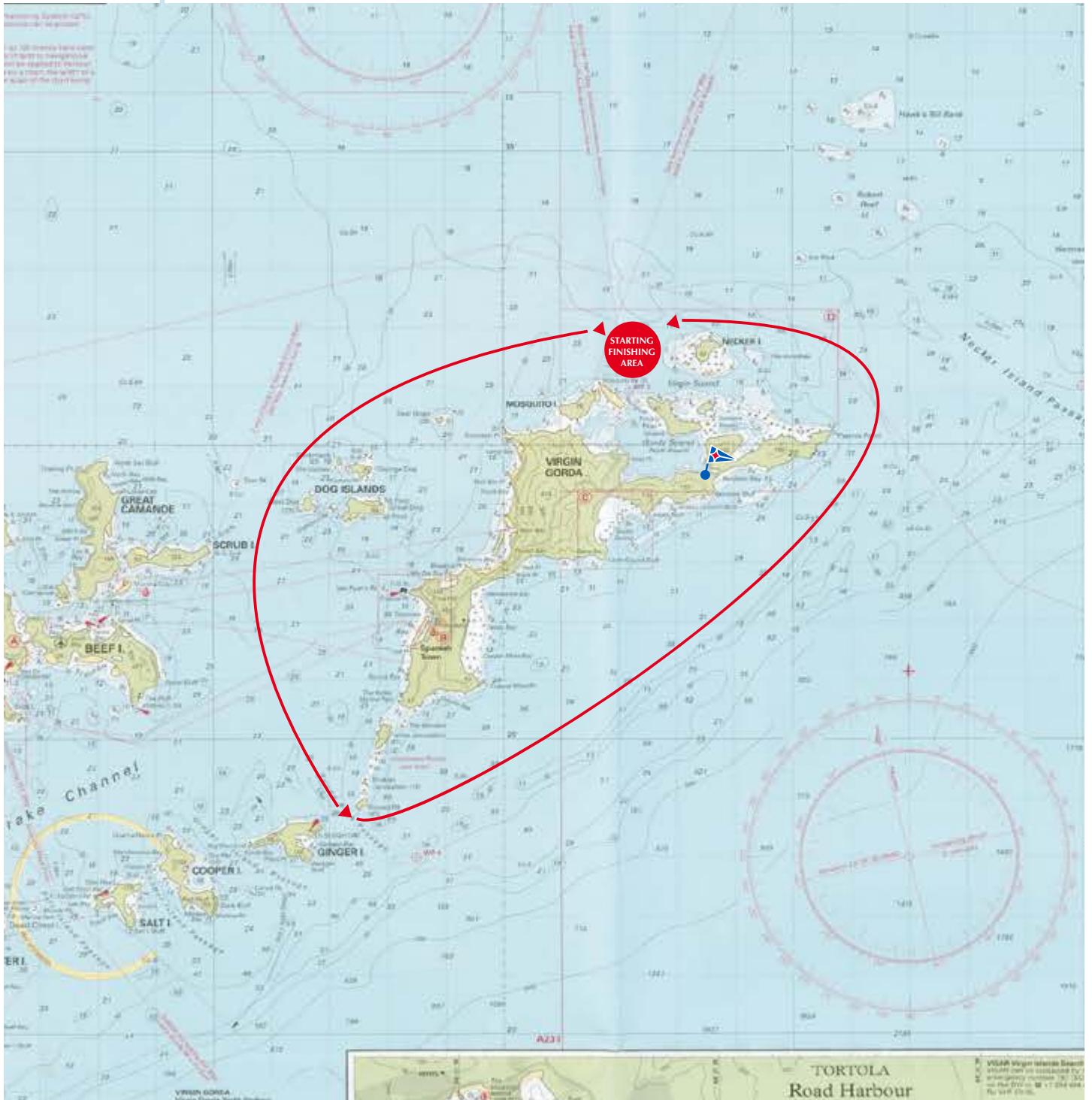
Virgin Gorda

COURSE N.:

05

APPROX 27 n.m

START - ECHO to port - LIMA to port - FOXTROT to port - FINISH



THE LENGTH OF THE COURSE IN MILES, THE COURSE MARKED, THE SYMBOLS AND THE POSITION OF THE MARKS ARE PURELY INDICATIVE



APPENDIX BRAVO COASTAL AND ISLAND COURSES



YACHT CLUB COSTA SMERALDA

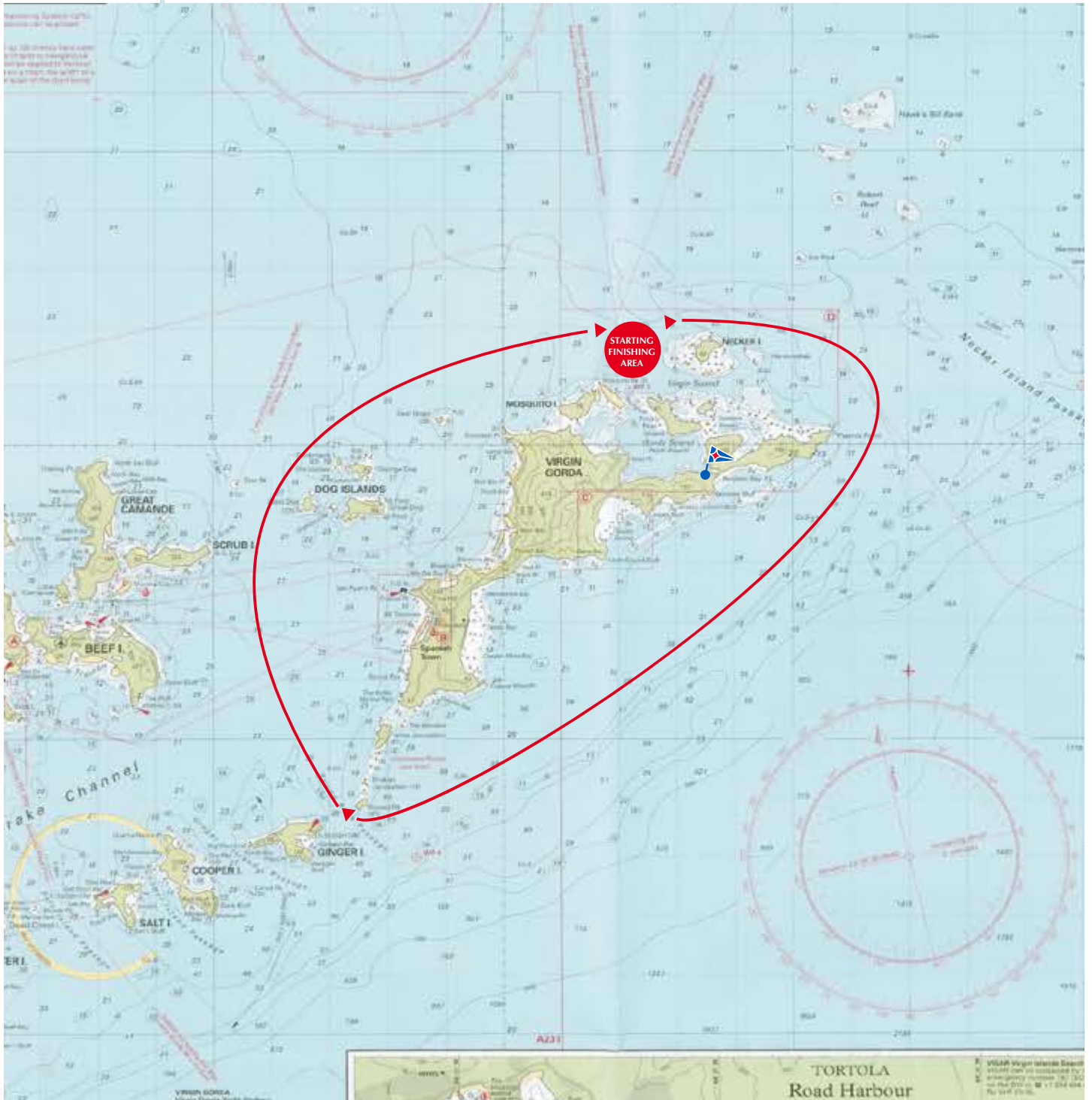
Virgin Gorda

COURSE N.:

06

APPROX 27 n.m

START - FOXTROT to starboard - LIMA to starboard - ECHO to starboard - FINISH



THE LENGTH OF THE COURSE IN MILES, THE COURSE MARKED, THE SYMBOLS AND THE POSITION OF THE MARKS ARE PURELY INDICATIVE



APPENDIX BRAVO COASTAL AND ISLAND COURSES



YACHT CLUB COSTA SMERALDA

Virgin Gorda

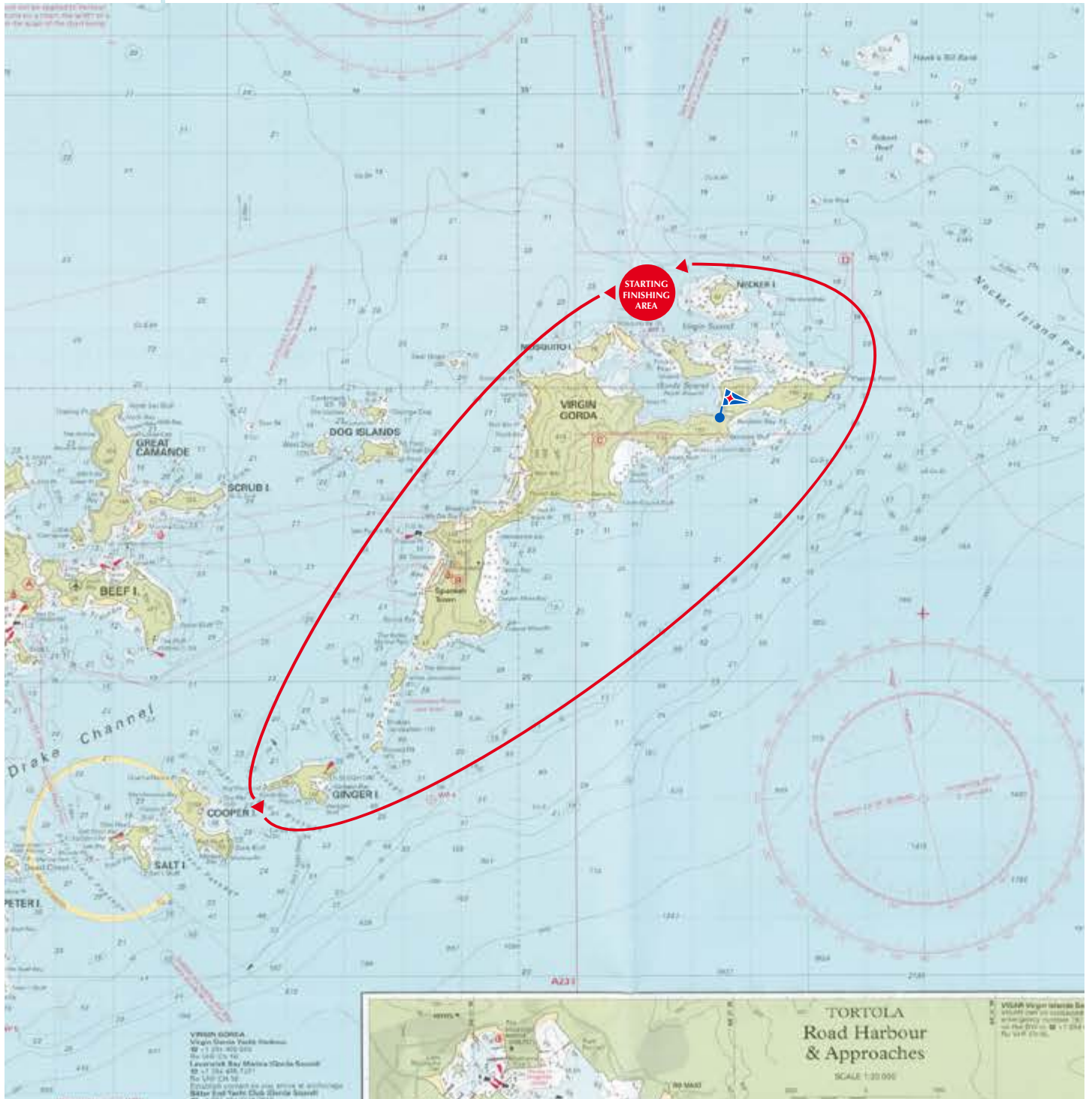
IN GORDA

COURSE N.:

07

APPROX 28 n.m

START - ECHO to starboard - HOTEL to port - FOXTROT to port - FINISH



THE LENGTH OF THE COURSE IN MILES, THE COURSE MARKED, THE SYMBOLS AND THE POSITION OF THE MARKS ARE PURELY INDICATIVE

APPENDIX BRAVO COASTAL AND ISLAND COURSES



YACHT CLUB COSTA SMERALDA

Virgin Gorda

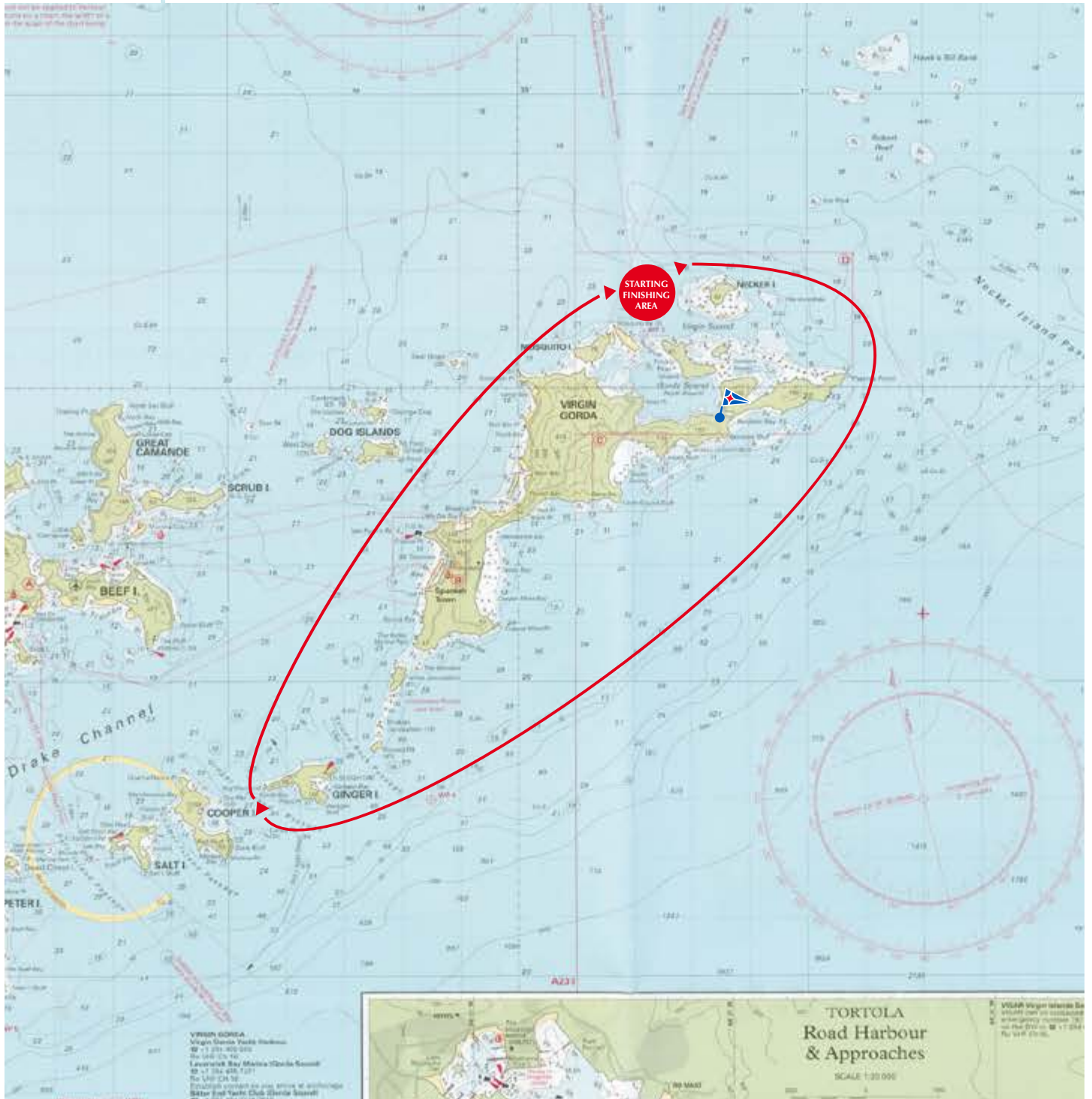
IN GORDA

COURSE N.:

08

APPROX 28 n.m

START - FOXTROT to starboard - HOTEL to starboard - ECHO to port - FINISH



THE LENGTH OF THE COURSE IN MILES, THE COURSE MARKED, THE SYMBOLS AND THE POSITION OF THE MARKS ARE PURELY INDICATIVE

APPENDIX BRAVO COASTAL AND ISLAND COURSES



YACHT CLUB COSTA SMERALDA

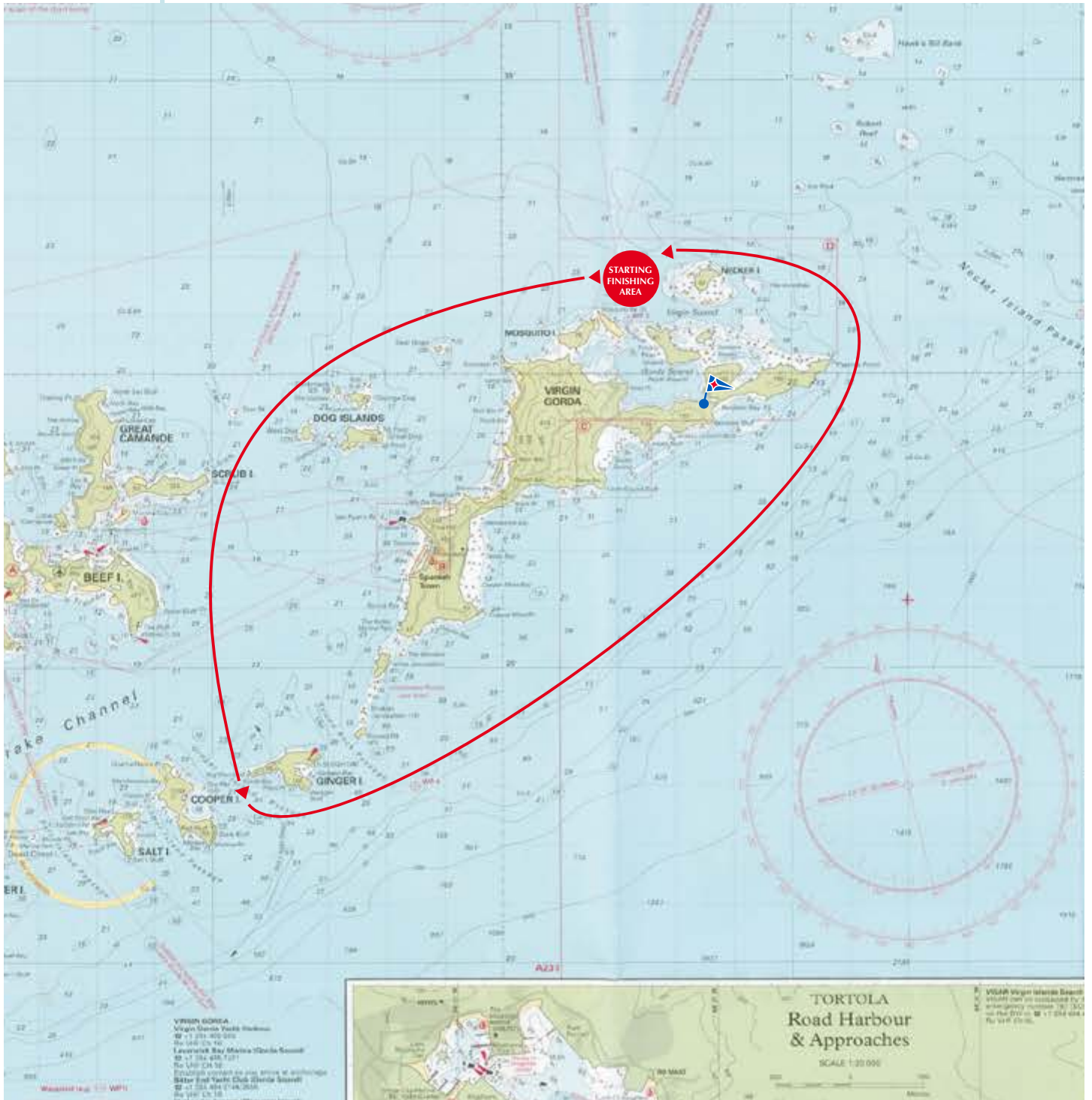
Virgin Gorda

COURSE N.:

09

APPROX 29 n.m

START - ECHO to port - HOTEL to port - FOXTROT to port - FINISH



THE LENGTH OF THE COURSE IN MILES, THE COURSE MARKED, THE SYMBOLS AND THE POSITION OF THE MARKS ARE PURELY INDICATIVE

APPENDIX BRAVO COASTAL AND ISLAND COURSES



YACHT CLUB COSTA SMERALDA

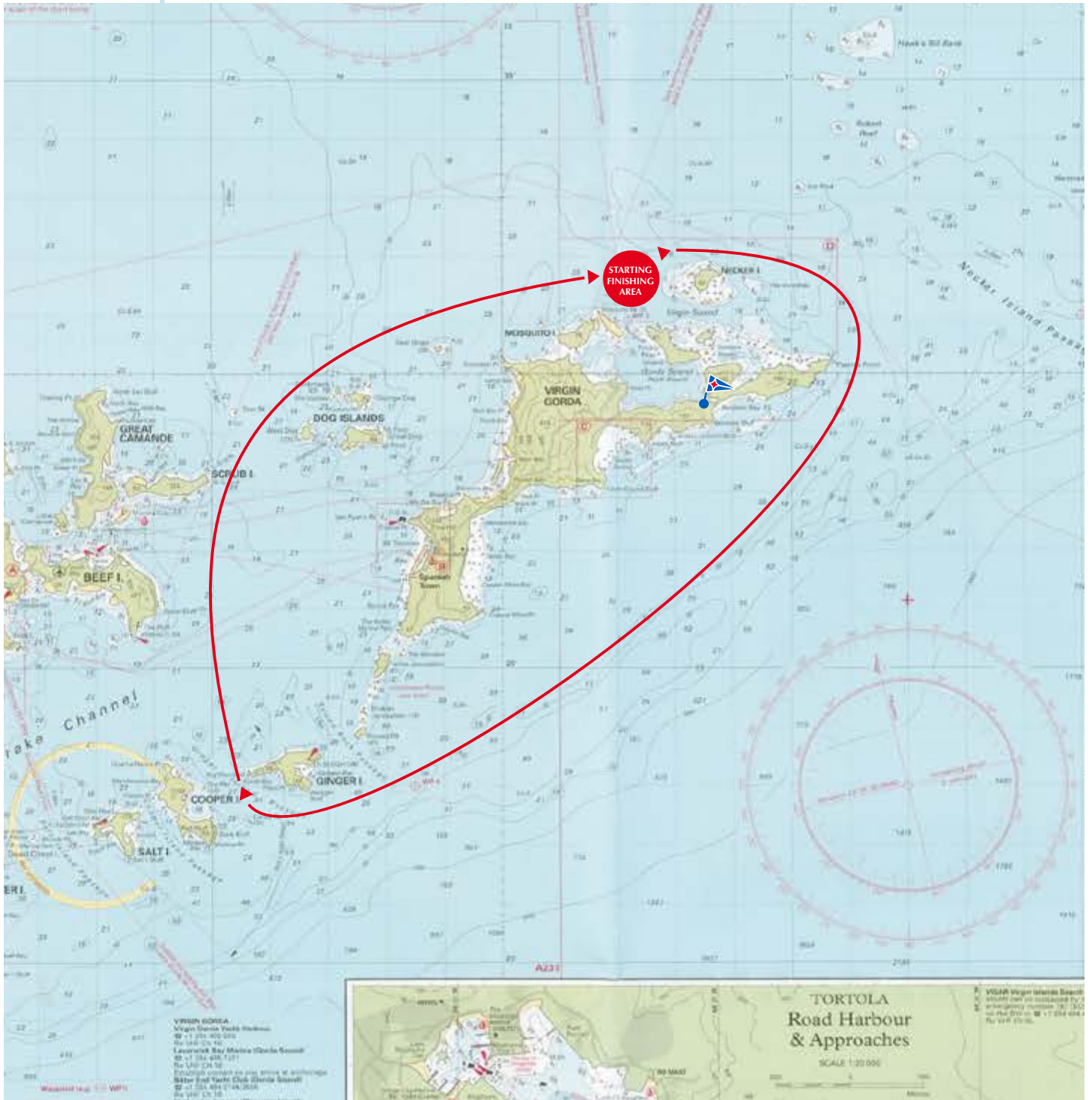
Virgin Gorda

COURSE N.:

10

APPROX 29 n.m

START - FOXTROT to starboard - HOTEL to starboard - ECHO to starboard - FINISH



THE LENGTH OF THE COURSE IN MILES, THE COURSE MARKED, THE SYMBOLS AND THE POSITION OF THE MARKS ARE PURELY INDICATIVE

APPENDIX BRAVO COASTAL AND ISLAND COURSES



YACHT CLUB COSTA SMERALDA

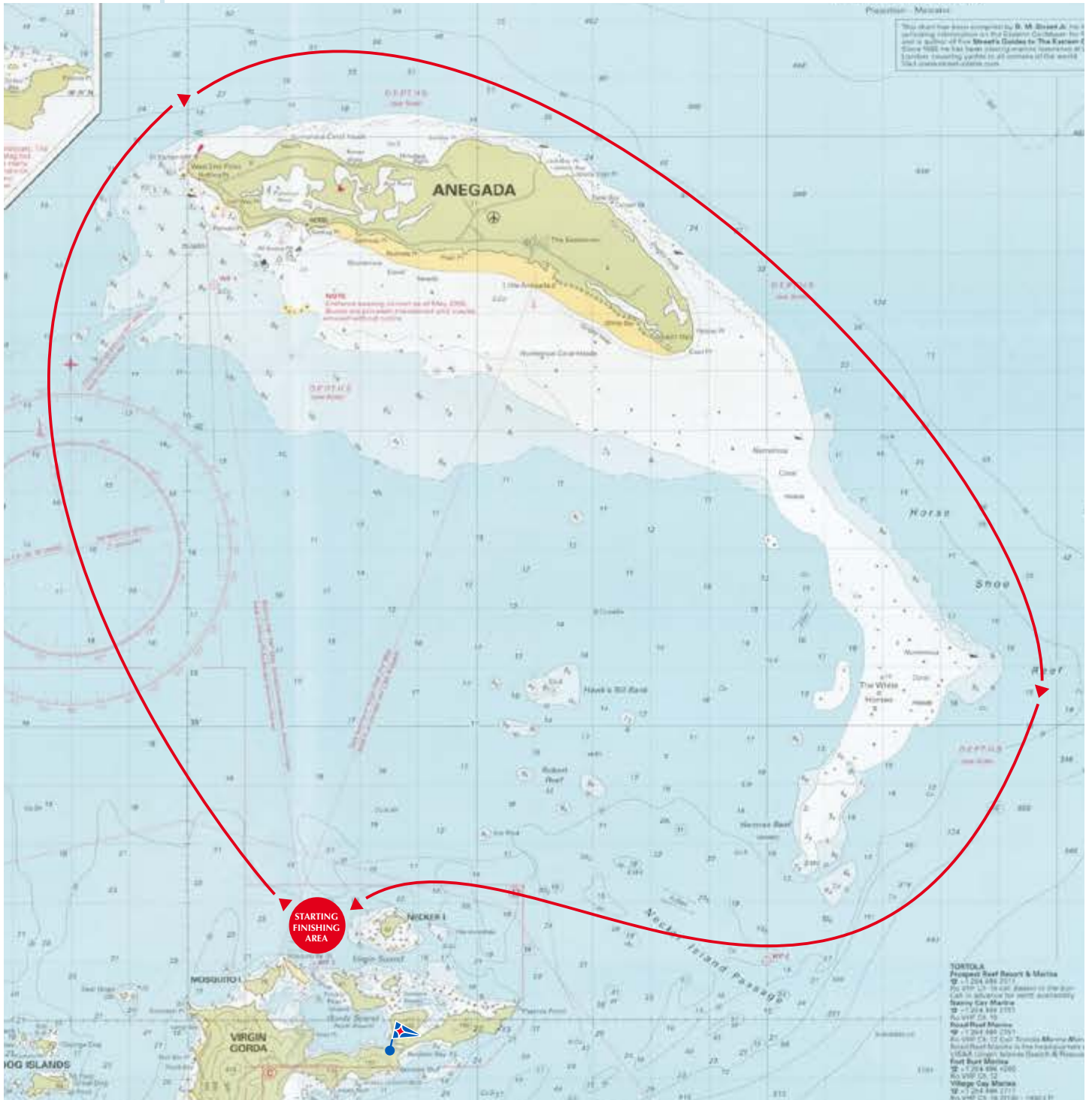
Virgin Gorda

COURSE N.:



APPROX 43 n.m

START - INDIO to starboard - FINISH



THE LENGTH OF THE COURSE IN MILES, THE COURSE MARKED, THE SYMBOLS AND THE POSITION OF THE MARKS ARE PURELY INDICATIVE

APPENDIX BRAVO COASTAL AND ISLAND COURSES



YACHT CLUB COSTA SMERALDA

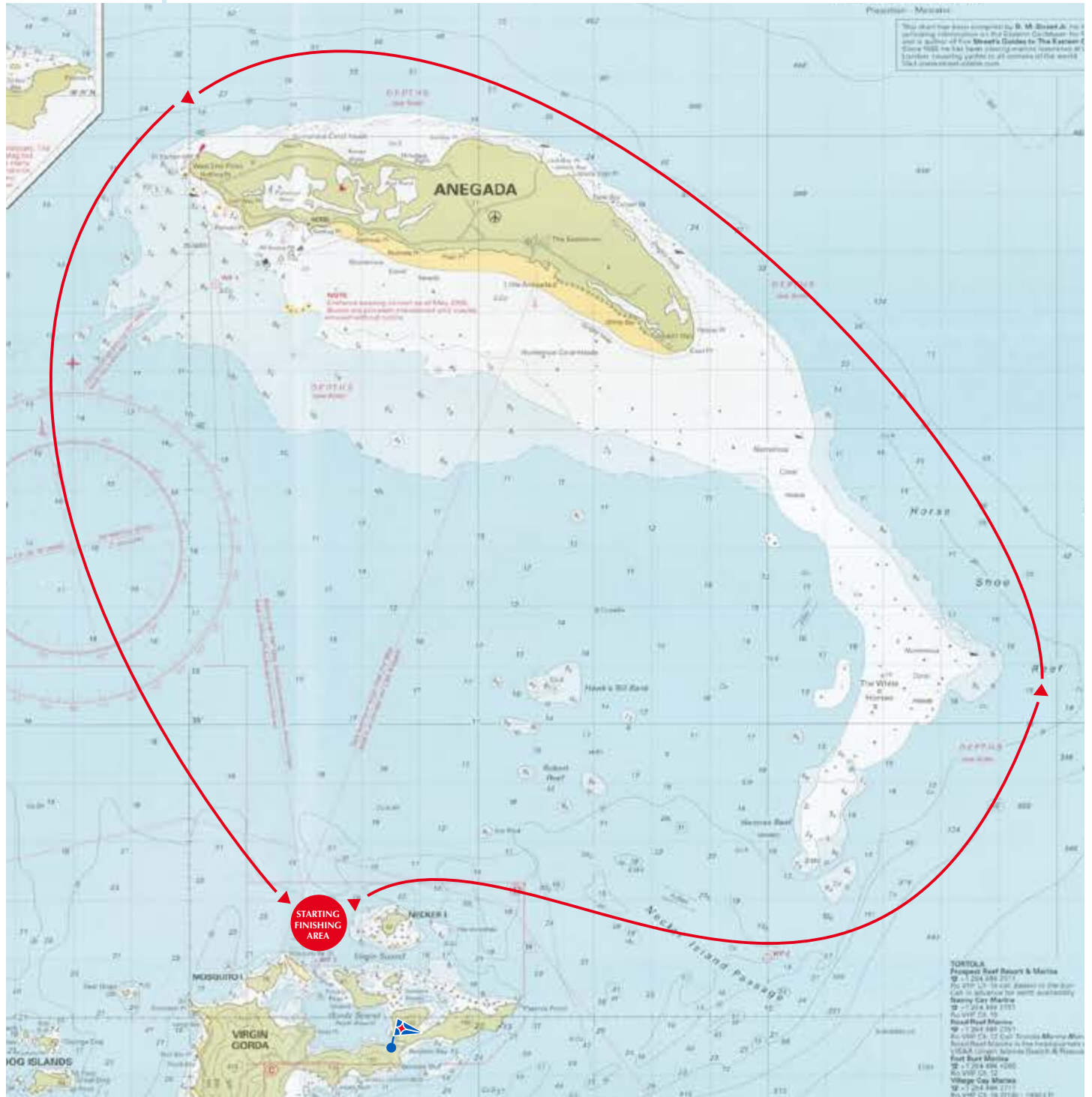
Virgin Gorda

COURSE N.:

12

APPROX 43 n.m

START - INDIO to port - FINISH



THE LENGTH OF THE COURSE IN MILES, THE COURSE MARKED, THE SYMBOLS AND THE POSITION OF THE MARKS ARE PURELY INDICATIVE

APPENDIX BRAVO COASTAL AND ISLAND COURSES



YACHT CLUB COSTA SMERALDA

Virgin Gorda

YCCS Marina & Clubhouse Services

t. +1 284 393 2000 | **mob.** +1 284 346 6262 | **VHF** 08 | **e.** reception@yccs.vg
For after hours, 24/7: +1 284 346 6262

P.O. box 132 | North Sound, Virgin Gorda | British Virgin Islands VG1150
Coordinates: 18 29' 564" N | 64 21' 662" W

www.yccs.com