



YACHT CLUB COSTA SMERALDA

Virgin Gorda

COURSE N.:

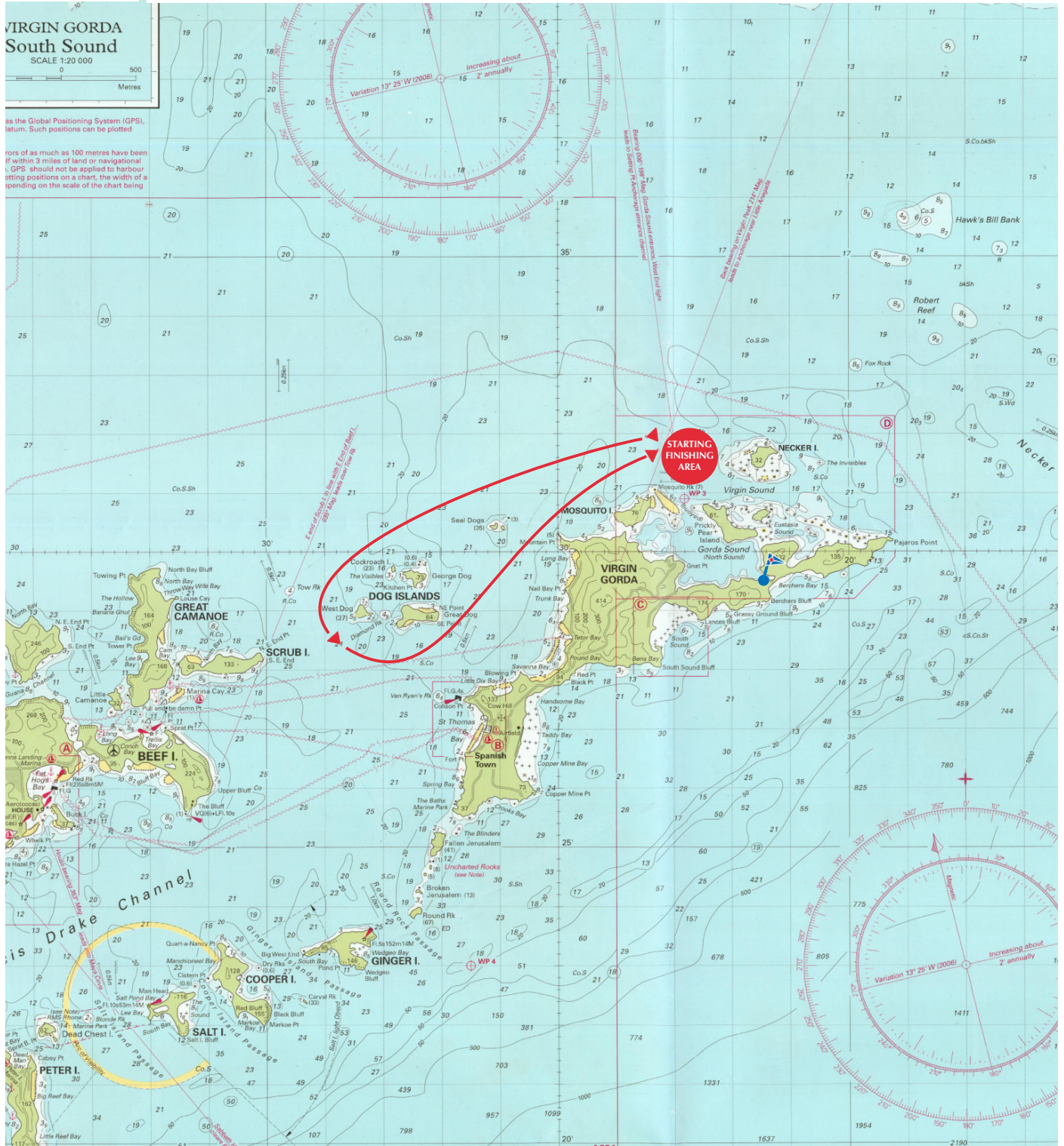
01

APPROX 14 n.m.

START - Dog Islands to PORT - FINISH

VIRGIN GORDA
South Sound
SCALE 1:20 000

as the Global Positioning System (GPS).
Such positions can be plotted
errors of as much as 100 metres have been
if within 3 miles of land or navigational
GPS should not be applied to harbour
plotting positions on a chart, the width of a
depending on the scale of the chart being



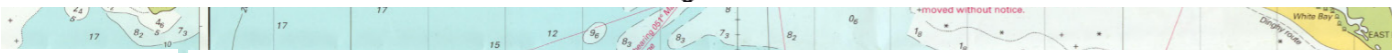
THE LENGTH OF THE COURSE IN MILES, THE COURSE MARKED, THE SYMBOLS AND THE POSITION OF THE MARKS ARE PURELY INDICATIVE



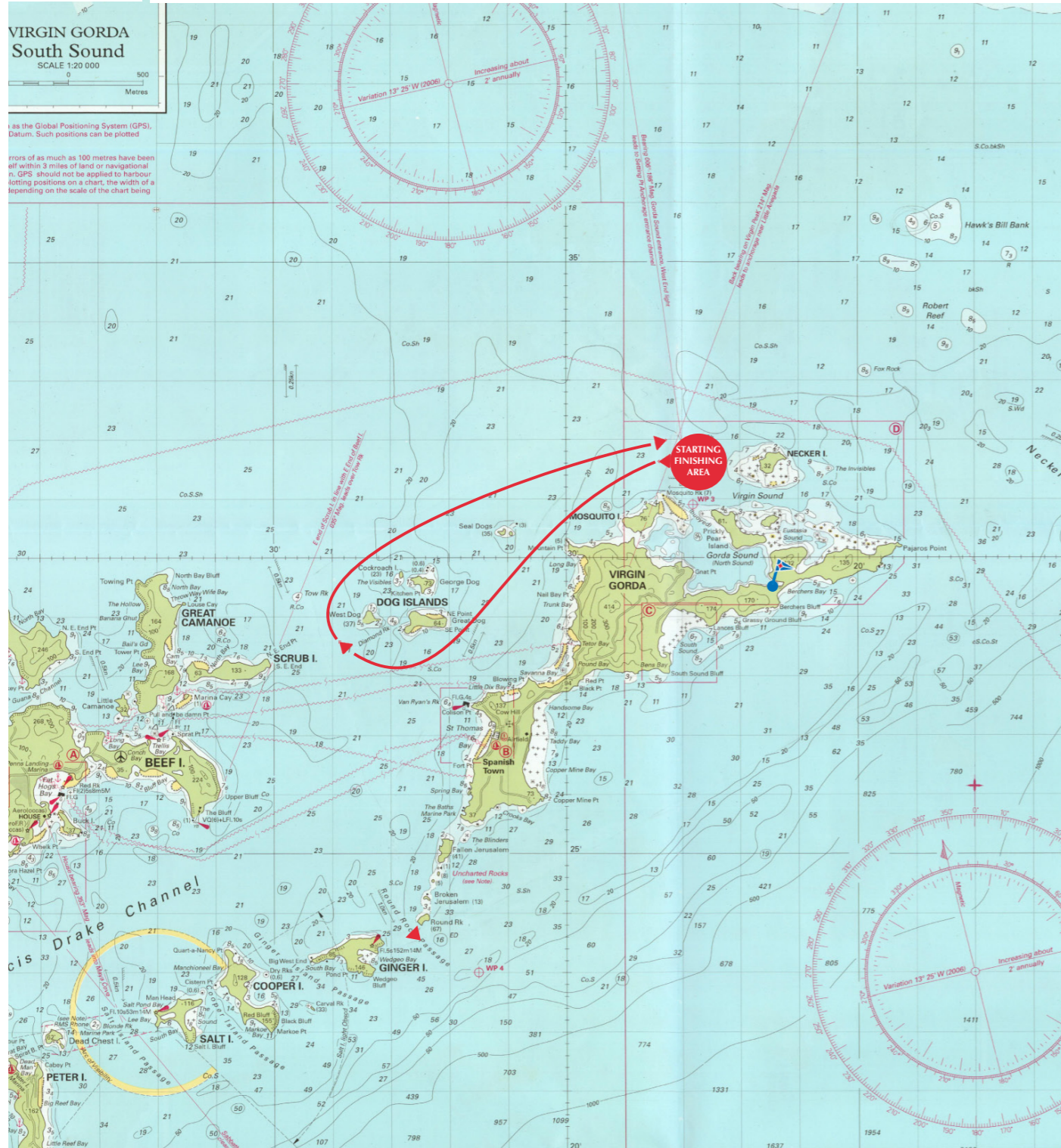


YACHT CLUB COSTA SMERALDA

Virgin Gorda



COURSE N.: APPROX 14 n.m.
02 START - Dog Islands to STARBOARD - FINISH



THE LENGHT OF THE COURSE IN MILES, THE COURSE MARKED, THE SYMBOLS AND THE POSITION OF THE MARKS ARE PURELY INDICATIVE

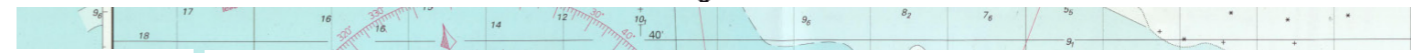


APPENDIX BRAVO COASTAL AND ISLAND COURSES

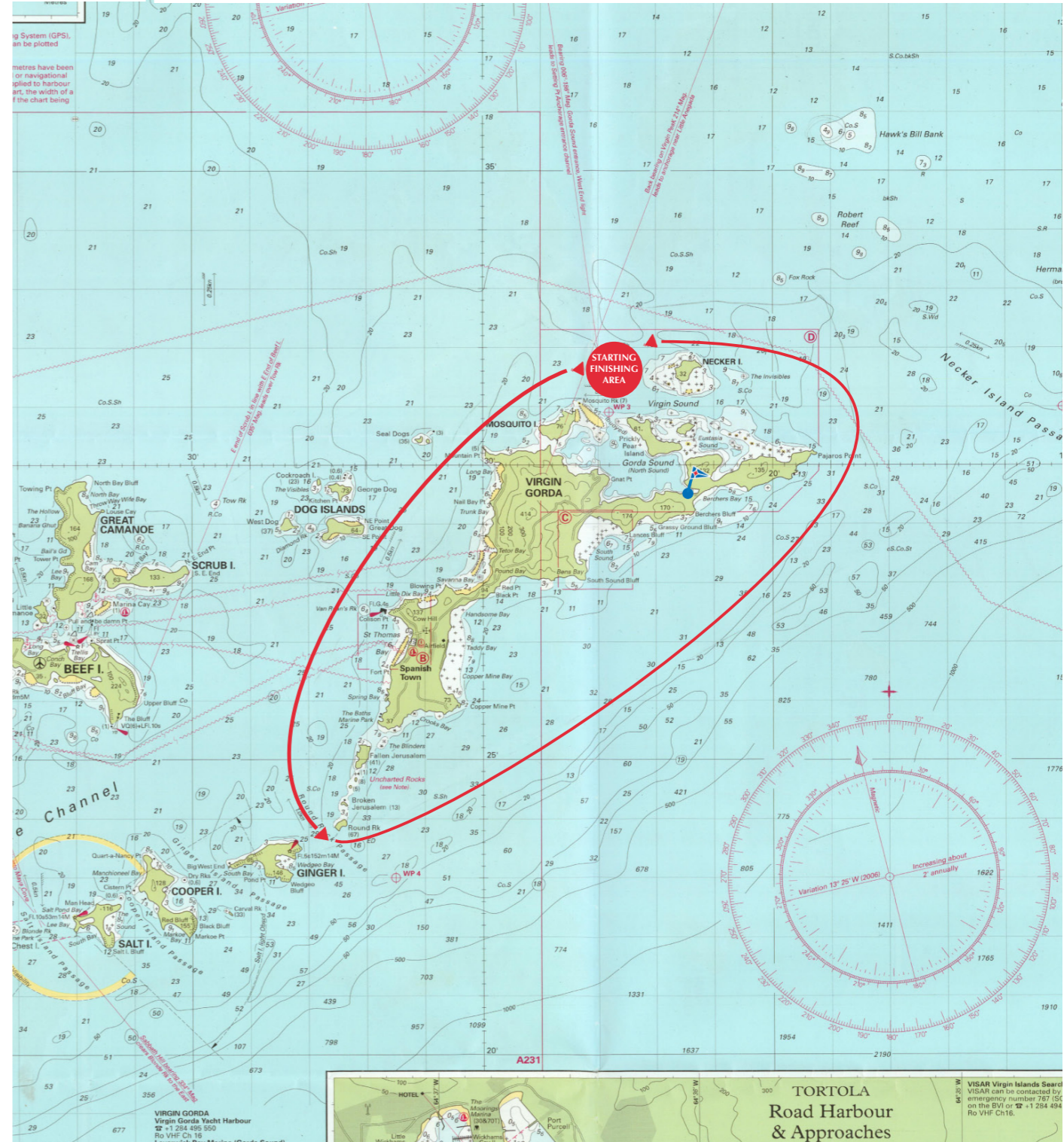


YACHT CLUB COSTA SMERALDA

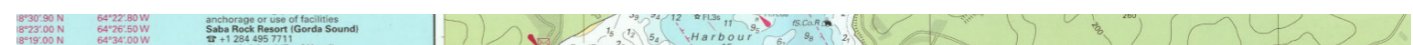
Virgin Gorda



COURSE N.: APPROX 25 n.m.
03 START - Dog Islands to STARBOARD - Round Rock to PORT - Necker Island to PORT - FINISH



THE LENGHT OF THE COURSE IN MILES, THE COURSE MARKED, THE SYMBOLS AND THE POSITION OF THE MARKS ARE PURELY INDICATIVE



APPENDIX BRAVO COASTAL AND ISLAND COURSES



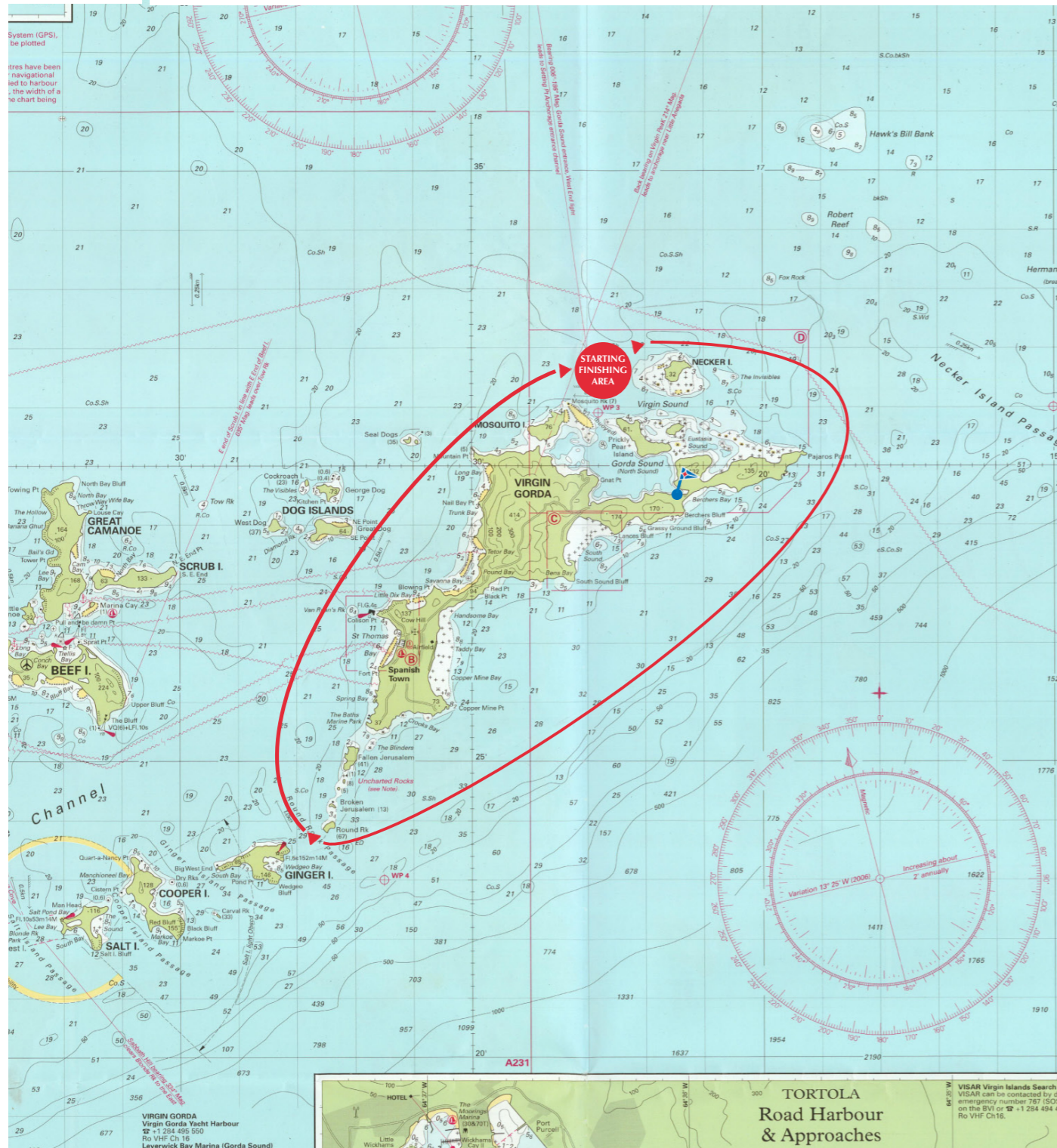
YACHT CLUB COSTA SMERALDA

Virgin Gorda

COURSE N.:
04

APPROX 25 n.m.

START - Necker Island to STARBOARD - Round Rock to STARBOARD - Dog Islands to PORT - FINISH



THE LENGTH OF THE COURSE IN MILES, THE COURSE MARKED, THE SYMBOLS AND THE POSITION OF THE MARKS ARE PURELY INDICATIVE

27° 00' N	64° 26' 50" W	anchorage or use of facilities	3 18° 30' 30" N	64° 22' 00" W	Saba Rock Resort (Gorda Sound)
27° 00' N	64° 34' 00" W	Virgin Gorda Yacht Harbour	4 18° 23' 00" N	64° 26' 00" W	Virgin Gorda Yacht Harbour
		Leeward Bay Marina (Gorda Sound)	5 18° 19' 00" N	64° 34' 00" W	Leeward Bay Marina (Gorda Sound)
		Necker Island (Reef Hotel)			Necker Island (Reef Hotel)

APPENDIX BRAVO COASTAL AND ISLAND COURSES



YACHT CLUB COSTA SMERALDA

Virgin Gorda

COURSE N.:
05

APPROX 27 n.m.

START - Dog Islands to PORT - Round Rock to PORT - Necker Island to PORT - FINISH



THE LENGTH OF THE COURSE IN MILES, THE COURSE MARKED, THE SYMBOLS AND THE POSITION OF THE MARKS ARE PURELY INDICATIVE

3 18° 30' 30" N	64° 22' 00" W	anchorage or use of facilities	3 18° 30' 30" N	64° 22' 00" W	Saba Rock Resort (Gorda Sound)
4 18° 23' 00" N	64° 26' 00" W	Virgin Gorda Yacht Harbour	4 18° 23' 00" N	64° 26' 00" W	Virgin Gorda Yacht Harbour
5 18° 19' 00" N	64° 34' 00" W	Leeward Bay Marina (Gorda Sound)	5 18° 19' 00" N	64° 34' 00" W	Leeward Bay Marina (Gorda Sound)
		Necker Island (Reef Hotel)			Necker Island (Reef Hotel)

APPENDIX BRAVO COASTAL AND ISLAND COURSES

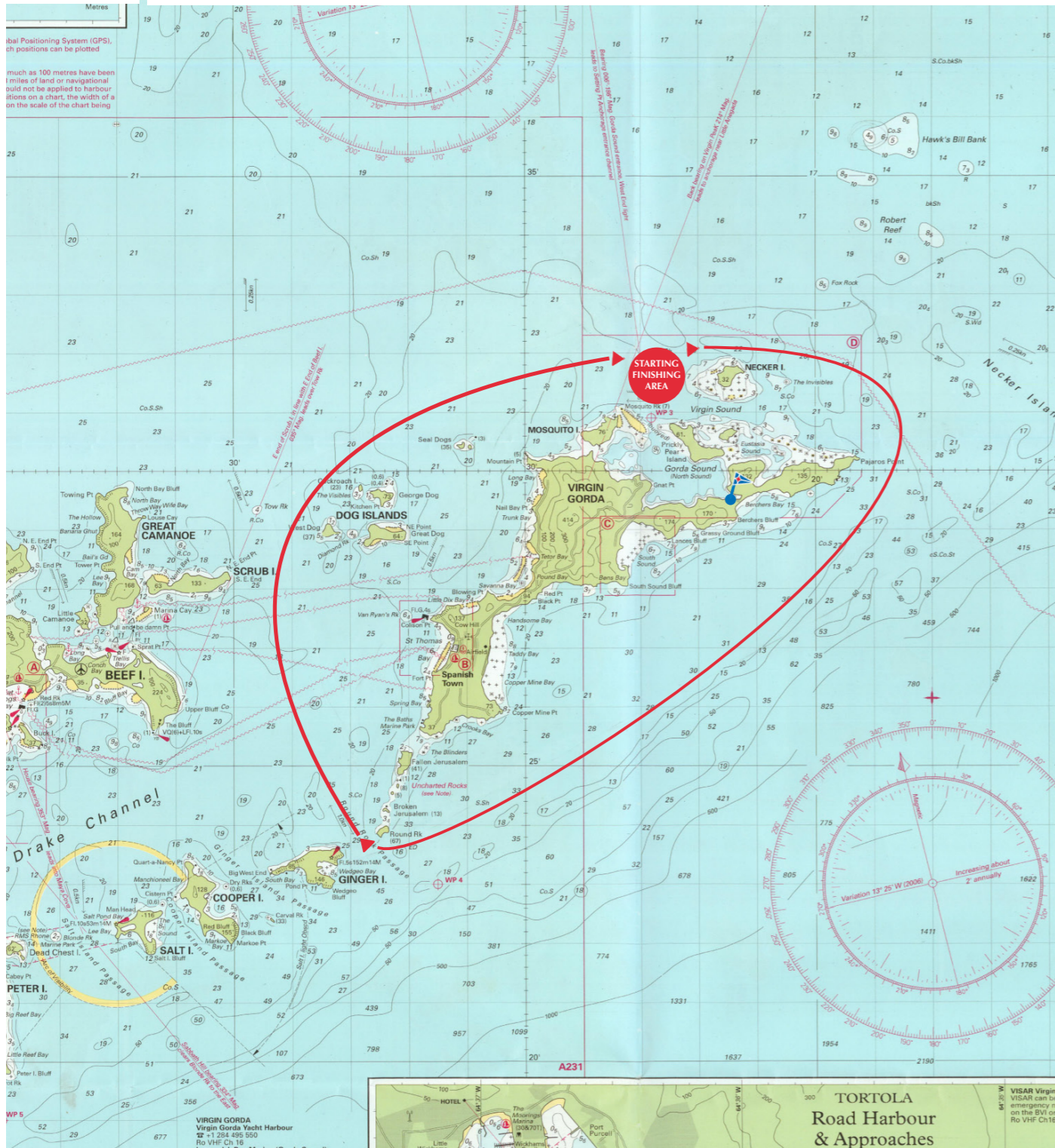


YACHT CLUB COSTA SMERALDA

Virgin Gorda

COURSE N.:
06

APPROX 27 n.m.
START - Necker Island to STARBOARD - Round Rock to STARBOARD - Dog Islands to STARBOARD - FINISH



THE LENGHT OF THE COURSE IN MILES, THE COURSE MARKED, THE SYMBOLS AND THE POSITION OF THE MARKS ARE PURELY INDICATIVE



APPENDIX BRAVO
COASTAL AND ISLAND COURSES



YACHT CLUB COSTA SMERALDA

Virgin Gorda

COURSE N.:
07

APPROX 29 n.m.
START - Dog Islands to PORT - Ginger Island to PORT - Necker Island to PORT - FINISH



THE LENGHT OF THE COURSE IN MILES, THE COURSE MARKED, THE SYMBOLS AND THE POSITION OF THE MARKS ARE PURELY INDICATIVE



APPENDIX BRAVO
COASTAL AND ISLAND COURSES



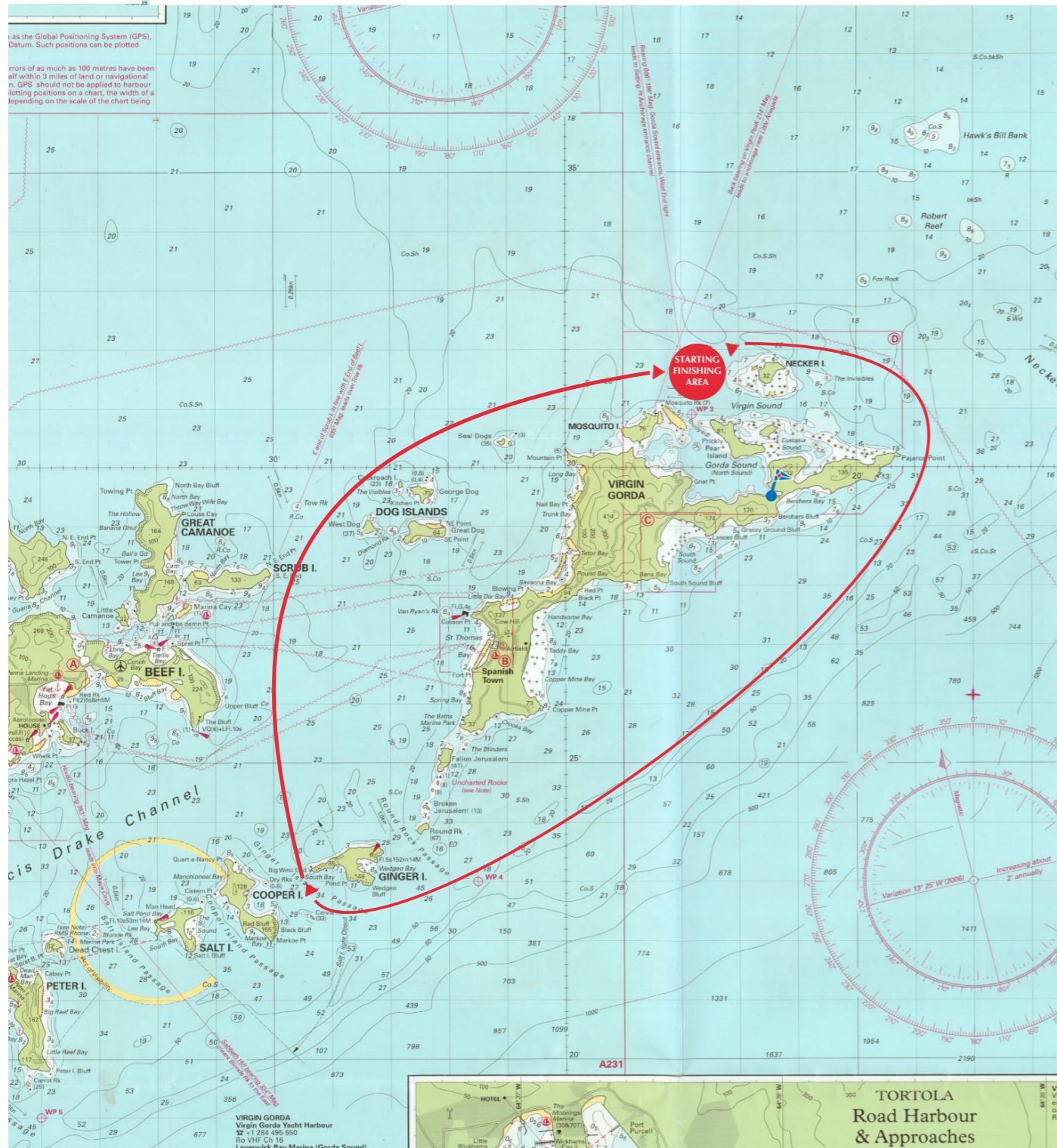
YACHT CLUB COSTA SMERALDA

Virgin Gorda

COURSE N.:
08

APPROX 29 n.m.

START - Necker Island to STARBOARD - Ginger Island to STARBOARD - Dog Islands to STARBOARD - FINISH



THE LENGTH OF THE COURSE IN MILES, THE COURSE MARKED, THE SYMBOLS AND THE POSITION OF THE MARKS ARE PURELY INDICATIVE

3 18°23'30" N	64°22'30" W	anchorage or use of facilities
4 18°23'00" N	64°26'50" W	Saba Rock Resort (Gorda Sound)
5 18°19'00" N	64°34'00" W	Anegada Island (Reef Hotel)

APPENDIX BRAVO
COASTAL AND ISLAND COURSES



YACHT CLUB COSTA SMERALDA

Virgin Gorda

COURSE N.:
09

APPROX 28 n.m.

START - Dog Islands to STARBOARD - Ginger Island to PORT - Necker Island to PORT - FINISH



THE LENGTH OF THE COURSE IN MILES, THE COURSE MARKED, THE SYMBOLS AND THE POSITION OF THE MARKS ARE PURELY INDICATIVE

4 18°23'00" N	64°26'50" W	Saba Rock Resort (Gorda Sound)
5 18°19'00" N	64°34'00" W	Anegada Island (Reef Hotel)

APPENDIX BRAVO
COASTAL AND ISLAND COURSES



YACHT CLUB COSTA SMERALDA

Virgin Gorda

COURSE N.:
10

APPROX 28 n.m.

START - Necker Island to STARBOARD - Ginger Island to STARBOARD - Dog Islands to PORT - FINISH



THE LENGTH OF THE COURSE IN MILES, THE COURSE MARKED, THE SYMBOLS AND THE POSITION OF THE MARKS ARE PURELY INDICATIVE



APPENDIX BRAVO COASTAL AND ISLAND COURSES



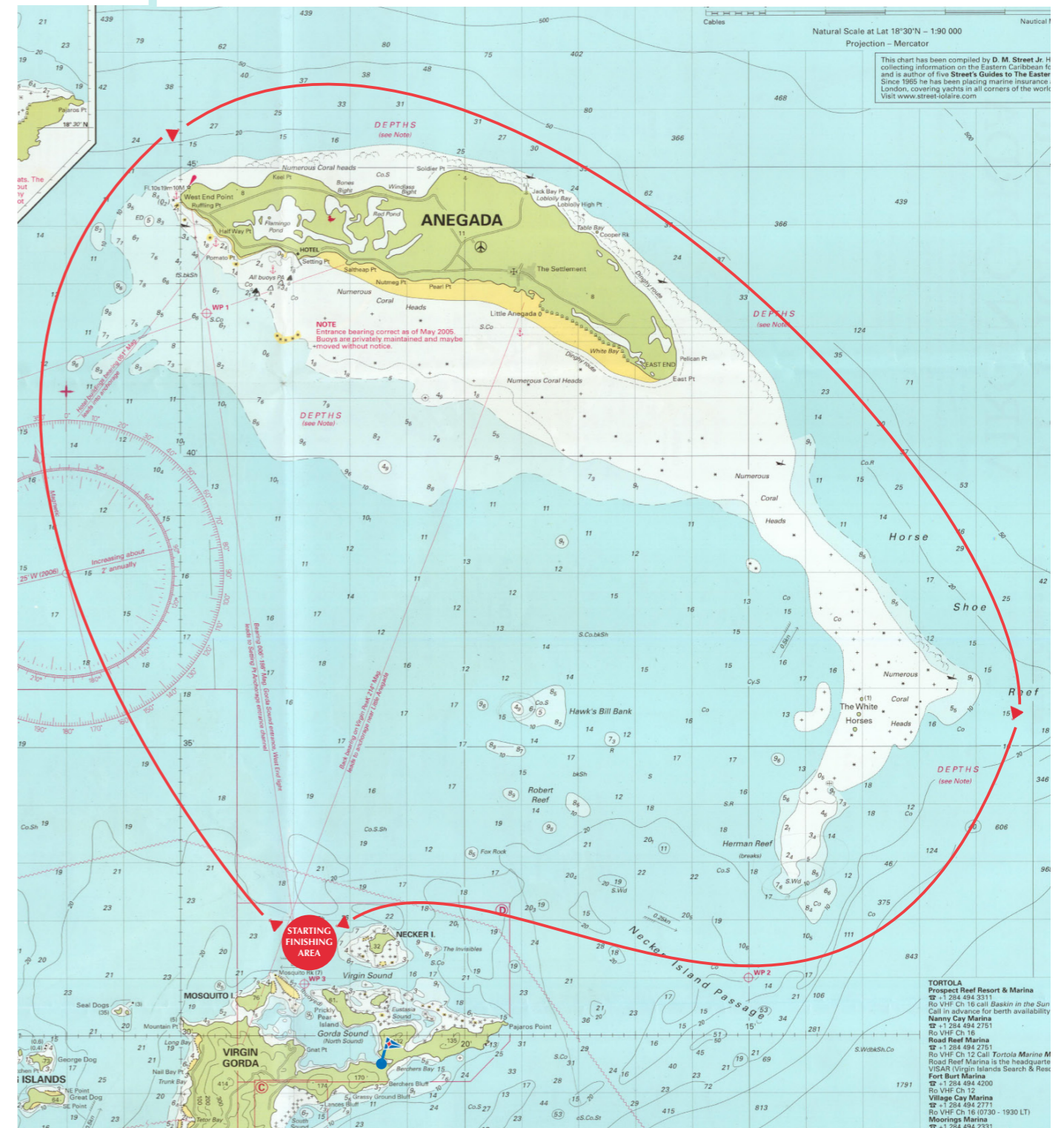
YACHT CLUB COSTA SMERALDA

Virgin Gorda

COURSE N.:
11

APPROX 43 n.m.

START - Anegada Island to STARBOARD - FINISH



THE LENGTH OF THE COURSE IN MILES, THE COURSE MARKED, THE SYMBOLS AND THE POSITION OF THE MARKS ARE PURELY INDICATIVE



APPENDIX BRAVO COASTAL AND ISLAND COURSES



YACHT CLUB COSTA SMERALDA

Virgin Gorda

CHARTS FOR THE

IMPORTANT

TORTOLA to

COURSE N.:

APPROX 43 n.m.

START - Anegada Island to PORT - FINISH

12



THE LENGTH OF THE COURSE IN MILES, THE COURSE MARKED, THE SYMBOLS AND THE POSITION OF THE MARKS ARE PURELY INDICATIVE



APPENDIX BRAVO COASTAL AND ISLAND COURSES